

## Anti-alpha 1 Antichymotrypsin SERPINA3 Monoclonal Antibody

Catalog Number: M02312

### About SERPINA3

F-actin cross-linking protein which is thought to anchor actin to a variety of intracellular structures. This is a bundling protein. Probably involved in vesicular trafficking via its association with the CART complex. The CART complex is necessary for efficient transferrin receptor recycling but not for EGFR degradation.

### Overview

Product Name	Anti-alpha 1 Antichymotrypsin SERPINA3 Monoclonal Antibody
Reactive Species	Human
Description	Boster Bio Anti-alpha 1 Antichymotrypsin SERPINA3 Monoclonal Antibody catalog # M02312. Tested in WB, IHC, ICC/IF, IP applications. This antibody reacts with Human.
Application	IP, IF, IHC, ICC, WB
Clonality	Monoclonal ADED-19
Formulation	Rabbit IgG in phosphate buffered saline, pH 7.4, 150mM NaCl, 0.02% sodium azide and 50% glycerol, 0.4-0.5mg/ml BSA.
Storage Instructions	Store at -20°C for one year. For short term storage and frequent use, store at 4°C for up to one month. Avoid repeated freeze-thaw cycles.
Host	Rabbit
Uniprot ID	P01011

### Technical Details

Immunogen	A synthesized peptide derived from human alpha 1 Antichymotrypsin Although its physiological function is unclear, it can inhibit neutrophil cathepsin G and mast cell chymase, both of which can convert angiotensin-1 to the active angiotensin-2.
Isotype	Rabbit IgG
Form	Liquid
Concentration	Actual concentration vary by lot. Use suggested dilution ratio to decide dilution procedure.
Purification	Affinity-chromatography
Suggested Dilutions	Dilute the sample so that the expected range of concentrations fall within the detection range of this kit. If the expected range of concentration is unknown, a pilot test should be conducted to decide the optimal dilution ratio for your samples.

Some PubMed article(s) citing the expression level of this target are as follows:

Boster Bio's internal QC testing used:

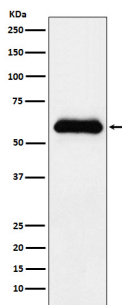
WB 1:500-1:1000

IHC 1:100-1:500

ICC/IF 1:50-1:200

IP 1:30

## Anti-alpha 1 Antichymotrypsin SERPINA3 Monoclonal Antibody (M02312) Images



Western blot analysis of alpha 1 Antichymotrypsin expression in human plasma lysate.

### Submit a product review to Biocompare.com

Submit a review of this product to Biocompare.com to receive a \$20 Amazon.com giftcard! Your reviews help your fellow scientists make the right decisions. Thank you for your contribution.



Anti-alpha 1 Antichymotrypsin SERPINA3 Monoclonal Antibody