

Anti-Synaptotagmin Syt1 Antibody (Monoclonal, ASV30)

Catalog Number: M02314

About Syt1

The alpha-crystallins are major water-soluble lens structural proteins of the vertebrate eye that are related to the small heat shock protein family. The alpha-crystallins possess structural and functional similarities with HSP25 and HSP27 (1). Mammalian lens crystallins are divided into alpha, beta and gamma families. Alpha and beta families are further divided into acidic and basic groups (Alpha-A and Alpha-B respectively). In the lens, alpha-crystallin primarily functions to maintain proper refractive index, however it can also function as a molecular chaperone that binds to the denatured proteins, keeping them in solution and thereby maintaining the translucency of the lens. When cellular stress occurs, alpha-crystallin enters its phosphorylated state and may serve a structural control function and play a role in protein maintenance (2). In addition to their interaction with proteins, alpha-crystallins also interact with native molecules such as membrane proteins, Golgi matrix protein, structural proteins, nuclear proteins and DNA (3, 4, 5, 6, and 7). Two other functions are an autokinase activity and participation in the intracellular architecture, and it has also been proven that both alpha-A and B prevent apoptosis by inhibiting caspases (8).

Overview

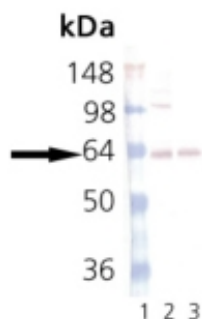
Product Name	Anti-Synaptotagmin Syt1 Antibody (Monoclonal, ASV30)
Reactive Species	Human, Mouse, Rat
Description	Boster Bio Anti-Synaptotagmin Syt1 Antibody (Monoclonal, ASV30) catalog # M02314. Tested in WB applications. This antibody reacts with Human, Mouse, Rat.
Application	WB
Clonality	Monoclonal ASV30
Formulation	Each vial contains 50% glycerol and 0.09% sodium azide.
Storage Instructions	Store at -20°C for one year. For short term storage and frequent use, store at 4°C for up to one month. Avoid repeated freeze-thaw cycles.
Host	Mouse
Uniprot ID	P21707

Technical Details

Immunogen	Rat brain synaptic junction protein complexes .
Predicted Reactive Species	Bovine, Goat, Guinea Pig, Hamster, Monkey, Sheep
Cross Reactivity	Detects ~20kDa. Does not cross-react with alphaB-crystallin, betaL-crystallin, ̢H-crystallin, gamma-crystallin, HSP25, HSP27 or HSP47 proteins.
Isotype	Mouse IgG
Form	Liquid

Concentration	0.5-1mg/ml, actual concentration vary by lot. Use suggested dilution ratio to decide dilution procedure.
Purification	Protein G affinity purified.
Suggested Dilutions	<p>Dilute the sample so that the expected range of concentrations fall within the detection range of this kit.</p> <p>If the expected range of concentration is unknown, a pilot test should be conducted to decide the optimal dilution ratio for your samples.</p> <p>Some PubMed article(s) citing the expression level of this target are as follows:</p> <p>Boster Bio's internal QC testing used:</p> <p>WB, 1:1,000, colorimetric, Human, Mouse, Rat</p>

Anti-Synaptotagmin Syt1 Antibody (Monoclonal, ASV30) (M02314) Images



Western blot analysis of Synaptotagmin expression in MW marker (lane 1), mouse brain extract (lane 2) and rat brain extract (lane 3). Synaptotagmin at 65KD was detected using mouse anti-Synaptotagmin Antigen Affinity purified monoclonal antibody (Catalog # M02314) at 1: 1000. The blot was developed using colorimetric method.

Submit a product review to Biocompare.com

Submit a review of this product to Biocompare.com to receive a \$20 Amazon.com giftcard! Your reviews help your fellow scientists make the right decisions. Thank you for your contribution.



Anti-Synaptotagmin Syt1 Antibody (Monoclonal, ASV30)