

Anti-Langerin (human) Monoclonal Antibody (DCGM4/122D5) (biotin conjugate)

Catalog Number: M02316-1

About CD207

This monoclonal antibody recognizes a protein of 56.5kDa, identified as cytokeratin 10 (CK10). CK10 is expressed in all suprabasal layers of the epidermis. In the epidermis, expression of CK10 strictly parallels the extent of differentiation; it is absent in the basal layer, appears in the first suprabasal layers and increases in concentration towards the granular layer. However, CK10 is rarely detected in early stages of vulvar squamous carcinomas (tumors less than 2 cm, clinical stage I) regardless of the tumor grade. In larger and more advanced tumors (greater than 2 cm, clinical stages II and III), CK10 is detected very frequently. Expression of CK10 is related to maturation of malignant keratinocytes, being preferentially detected in more-differentiated parts.

Overview

Product Name	Anti-Langerin (human) Monoclonal Antibody (DCGM4/122D5) (biotin conjugate)
Reactive Species	Human
Description	Boster Bio Anti-Langerin (human) Monoclonal Antibody (DCGM4/122D5) (biotin conjugate) catalog # M02316-1. Tested in IHC applications. This antibody reacts with Human.
Conjugate	Biotin
Application	IHC
Clonality	Monoclonal DCGM4/122D5
Formulation	Liquid. In PBS containing 50% glycerol.
Storage Instructions	-80°C
Host	Mouse
Uniprot ID	Q9UJ71

Technical Details

Immunogen	In vitro-derived human DCs from CD34+ cells in GM-CSF+TNF-alpha.
Predicted Reactive Species	Pig, Rabbit
Cross Reactivity	Does not cross-react with primate, avian or amphibian GR.
Isotype	IgG1, kappa
Form	Liquid. In PBS containing 50% glycerol.

Concentration	0.5-1mg/ml, actual concentration vary by lot. Use suggested dilution ratio to decide dilution procedure.
Purification	Purified using QMA Hyper D ion exchange chromatography
Suggested Dilutions	<p>Dilute the sample so that the expected range of concentrations fall within the detection range of this kit.</p> <p>If the expected range of concentration is unknown, a pilot test should be conducted to decide the optimal dilution ratio for your samples.</p> <p>Some PubMed article(s) citing the expression level of this target are as follows:</p> <p>Boster Bio's internal QC testing used:</p> <p>Optimal conditions must be determined individually for each application.</p>

Anti-Langerin (human) Monoclonal Antibody (DCGM4/122D5) (biotin conjugate) (M02316-1) Images

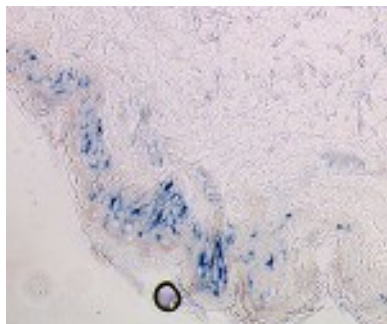


Figure 1. IHC analysis of CD207 using anti-CD207 antibody (M02316-1).

CD207 was detected in paraffin-embedded section. Heat mediated antigen retrieval was performed in citrate buffer (pH6, epitope retrieval solution) for 20 mins. The tissue section was blocked with 10% goat serum. The tissue section was then incubated with 1ug/ml rabbit anti-CD207 Antibody (M02316-1) overnight at 4°C. Biotinylated goat anti Mouse IgG antibody was used as secondary antibody and incubated for 30 minutes at 37°C. The tissue section was developed using Streptavidin-Biotin-Complex (SABC)(Catalog # SA1021) with DAB as the chromogen.

Submit a product review to Biocompare.com

Submit a review of this product to Biocompare.com to receive a \$20 Amazon.com giftcard! Your reviews help your fellow scientists make the right decisions. Thank you for your contribution.



Anti-Langerin (human) Monoclonal Antibody (DCGM4/122D5) (biotin conjugate)