

## Anti-Zyxin Monoclonal Antibody

Catalog Number: M02365

### About ZYX

F-actin cross-linking protein which is thought to anchor actin to a variety of intracellular structures. This is a bundling protein. Probably involved in vesicular trafficking via its association with the CART complex. The CART complex is necessary for efficient transferrin receptor recycling but not for EGFR degradation.

### Overview

Product Name	Anti-Zyxin Monoclonal Antibody
Reactive Species	Human, Mouse, Rat
Description	Boster Bio Anti-Zyxin Monoclonal Antibody catalog # M02365. Tested in WB, IHC, ICC/IF, IP, Flow Cytometry applications. This antibody reacts with Human, Mouse, Rat.
Application	Flow Cytometry, IP, IF, IHC, ICC, WB
Clonality	Monoclonal AFOG-26
Formulation	Rabbit IgG in phosphate buffered saline, pH 7.4, 150mM NaCl, 0.02% sodium azide and 50% glycerol, 0.4-0.5mg/ml BSA.
Storage Instructions	Store at -20°C for one year. For short term storage and frequent use, store at 4°C for up to one month. Avoid repeated freeze-thaw cycles.
Host	Rabbit
Uniprot ID	Q15942

### Technical Details

Immunogen	A synthesized peptide derived from human Zyxin.
Isotype	Rabbit IgG
Form	Liquid
Concentration	Actual concentration vary by lot. Use suggested dilution ratio to decide dilution procedure.
Purification	Affinity-chromatography
Suggested Dilutions	Dilute the sample so that the expected range of concentrations fall within the detection range of this kit. If the expected range of concentration is unknown, a pilot test should be conducted to decide the optimal dilution ratio for your samples. Some PubMed article(s) citing the expression level of this target are as follows: Boster Bio's internal QC testing used:

	WB 1:1000-1:5000 IHC 1:50-1:200 ICC/IF 1:50-1:200 IP 1:50 FC 1:500
--	--

## Anti-Zyxin Monoclonal Antibody (M02365) Images

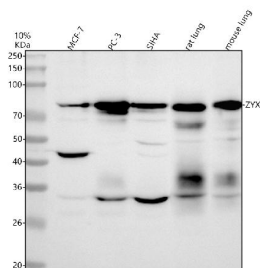


Figure 1. Western blot analysis of Zyxin using anti-Zyxin antibody (M02365).

Electrophoresis was performed on a 5-20% SDS-PAGE gel at 70V (Stacking gel) / 90V (Resolving gel) for 2-3 hours. The sample well of each lane was loaded with 30 ug of sample under reducing conditions.

Lane 1: human MCF-7 whole cell lysates,

Lane 2: human PC-3 whole cell lysates,

Lane 3: human SIHA whole cell lysates,

Lane 4: rat lung tissue lysates,

Lane 5: mouse lung tissue lysates.

After electrophoresis, proteins were transferred to a nitrocellulose membrane at 150 mA for 50-90 minutes.

Blocked the membrane with 5% non-fat milk/TBS for 1.5

hour at RT. The membrane was incubated with rabbit anti-

Zyxin antigen affinity purified monoclonal antibody (Catalog

# M02365) at 1:1000 overnight at 4°C, then washed with

TBS-0.1%Tween 3 times with 5 minutes each and probed

with a goat anti-rabbit IgG-HRP secondary antibody at a

dilution of 1:500 for 1.5 hour at RT. The signal is developed

using an Enhanced Chemiluminescent detection (ECL) kit

(Catalog # EK1002) with Tanon 5200 system. A specific

band was detected for Zyxin at approximately 78 kDa. The

expected band size for Zyxin is at 61 kDa.

## Submit a product review to Biocompare.com

Submit a review of this product to Biocompare.com to receive a \$20 Amazon.com giftcard! Your reviews help your fellow scientists make the right decisions. Thank you for your contribution.



Anti-Zyxin Monoclonal Antibody