

Anti-RAB7 RAB7A Rabbit Monoclonal Antibody

Catalog Number: M02409

About RAB7A

F-actin cross-linking protein which is thought to anchor actin to a variety of intracellular structures. This is a bundling protein. Probably involved in vesicular trafficking via its association with the CART complex. The CART complex is necessary for efficient transferrin receptor recycling but not for EGFR degradation.

Overview

Product Name	Anti-RAB7 RAB7A Rabbit Monoclonal Antibody
Reactive Species	Human, Mouse, Rat
Description	Boster Bio Anti-RAB7 RAB7A Rabbit Monoclonal Antibody catalog # M02409. Tested in WB, IHC, ICC/IF, Flow Cytometry applications. This antibody reacts with Human, Mouse, Rat.
Application	Flow Cytometry, IF, IHC, ICC, WB
Clonality	Monoclonal GHA-18
Formulation	Rabbit IgG in phosphate buffered saline, pH 7.4, 150mM NaCl, 0.02% sodium azide and 50% glycerol, 0.4-0.5mg/ml BSA.
Storage Instructions	Store at -20°C for one year. For short term storage and frequent use, store at 4°C for up to one month. Avoid repeated freeze-thaw cycles.
Host	Rabbit
Uniprot ID	P51149

Technical Details

Immunogen	A synthesized peptide derived from human RAB7
Isotype	Rabbit IgG
Form	Liquid
Concentration	Actual concentration vary by lot. Use suggested dilution ratio to decide dilution procedure.
Purification	Affinity-chromatography
Suggested Dilutions	Dilute the sample so that the expected range of concentrations fall within the detection range of this kit. If the expected range of concentration is unknown, a pilot test should be conducted to decide the optimal dilution ratio for your samples. Some PubMed article(s) citing the expression level of this target are as follows: Boster Bio's internal QC testing used:

	WB 1:1000-1:2000 IHC 1:50-1:200 ICC/IF 1:50-1:200 FC 1:50
--	--

Anti-RAB7 RAB7A Rabbit Monoclonal Antibody (M02409) Images

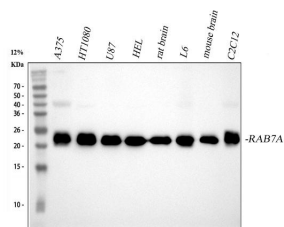
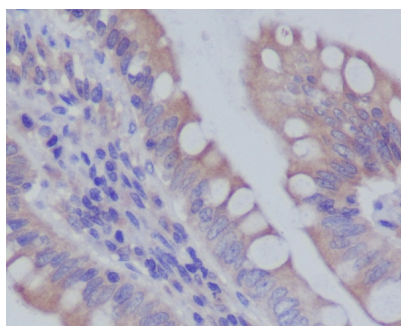


Figure 1. Western blot analysis of RAB7 using anti-RAB7 antibody (M02409).

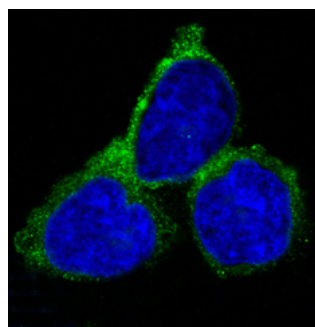
Electrophoresis was performed on a 5-20% SDS-PAGE gel at 70V (Stacking gel) / 90V (Resolving gel) for 2-3 hours. The sample well of each lane was loaded with 30 ug of sample under reducing conditions.

Lane 1: human A375 whole cell lysates,
Lane 2: human HT1080 whole cell lysates,
Lane 3: human U87 whole cell lysates,
Lane 4: human HEL whole cell lysates,
Lane 5: rat brain tissue lysates,
Lane 6: rat L6 whole cell lysates,
Lane 7: mouse brain tissue lysates,
Lane 8: mouse C2C12 whole cell lysates.

After electrophoresis, proteins were transferred to a nitrocellulose membrane at 150 mA for 50-90 minutes. Blocked the membrane with 5% non-fat milk/TBS for 1.5 hour at RT. The membrane was incubated with rabbit anti-RAB7 antigen affinity purified monoclonal antibody (Catalog # M02409) at 1:1000 overnight at 4°C, then washed with TBS-0.1%Tween 3 times with 5 minutes each and probed with a goat anti-rabbit IgG-HRP secondary antibody at a dilution of 1:5000 for 1.5 hour at RT. The signal is developed using an Enhanced Chemiluminescent detection (ECL) kit (Catalog # EK1002) with Tanon 5200 system. A specific band was detected for RAB7 at approximately 23 kDa. The expected band size for RAB7 is at 23 kDa.



Immunohistochemical analysis of paraffin-embedded human colon, using RAB7 Antibody.



Immunofluorescent analysis of HeLa cells, using RAB7 Antibody.

Submit a review of this product to Biocompare.com to receive a \$20 Amazon.com giftcard! Your reviews help your fellow scientists make the right decisions. Thank you for your contribution.



Anti-RAB7 RAB7A Rabbit Monoclonal Antibody