

Anti-Cytokeratin 7 KRT7 Rabbit Monoclonal Antibody

Catalog Number: M02416-2

About KRT7

F-actin cross-linking protein which is thought to anchor actin to a variety of intracellular structures. This is a bundling protein. Probably involved in vesicular trafficking via its association with the CART complex. The CART complex is necessary for efficient transferrin receptor recycling but not for EGFR degradation.

Overview

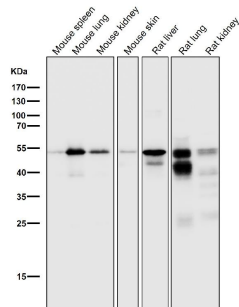
Product Name	Anti-Cytokeratin 7 KRT7 Rabbit Monoclonal Antibody
Reactive Species	Human, Mouse, Rat
Description	Boster Bio Anti-Cytokeratin 7 KRT7 Rabbit Monoclonal Antibody catalog # M02416-2. Tested in WB, IHC, ICC/IF applications. This antibody reacts with Human, Mouse, Rat.
Application	IF, IHC, ICC, WB
Clonality	Monoclonal GEC-11
Formulation	Rabbit IgG in phosphate buffered saline, pH 7.4, 150mM NaCl, 0.02% sodium azide and 50% glycerol, 0.4-0.5mg/ml BSA.
Storage Instructions	Store at -20°C for one year. For short term storage and frequent use, store at 4°C for up to one month. Avoid repeated freeze-thaw cycles.
Host	Rabbit
Uniprot ID	P08729

Technical Details

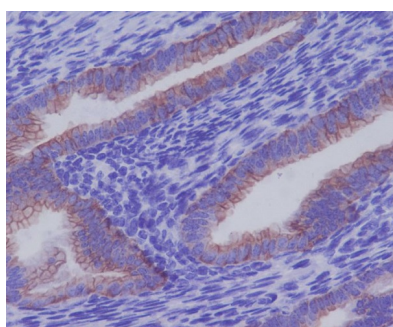
Immunogen	A synthesized peptide derived from human Cytokeratin 7
Isotype	Rabbit IgG
Form	Liquid
Concentration	Actual concentration vary by lot. Use suggested dilution ratio to decide dilution procedure.
Purification	Affinity-chromatography
Suggested Dilutions	Dilute the sample so that the expected range of concentrations fall within the detection range of this kit. If the expected range of concentration is unknown, a pilot test should be conducted to decide the optimal dilution ratio for your samples. Some PubMed article(s) citing the expression level of this target are as follows: Boster Bio's internal QC testing used:

	WB 1:500-1:1000 IHC 1:100-1:500 ICC/IF 1:50-1:200
--	---

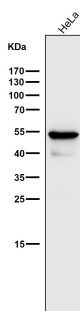
Anti-Cytokeratin 7 KRT7 Rabbit Monoclonal Antibody (M02416-2) Images



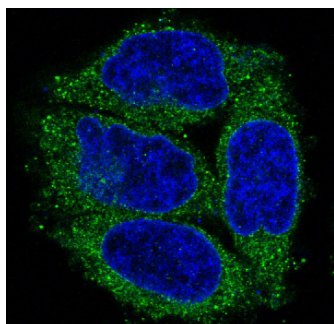
All lanes use the Antibody at 1:1W dilution for 1 hour at room temperature.



Immunohistochemical analysis of paraffin-embedded human uterus, using Cytokeratin 7 Antibody.

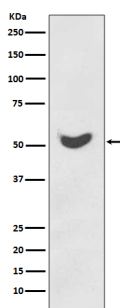


All lanes use the Antibody at 1:1W dilution for 1 hour at room temperature.



Immunofluorescent analysis of HeLa cells, using Cytokeratin 7 Antibody.

Western blot analysis of Cytokeratin 7 expression in HeLa cell lysate.



1 Publications Citing This Product

1. PubMed ID: 29048644, Bu S, Zhang Q, Wang Q, Lai D. Int J Oncol. 2017 Nov;51(5):1405-1414. doi: 10.3892/ijo.2017.4123. Epub 2017 Sep 14. Human amniotic epithelial cells inhibit growth of epithelial ovarian cancer cells via TGF-beta1-mediated cell cycle arrest

Visit bosterbio.com/anti-cytokeratin-7-rabbit-monoclonal-antibody-m02416-2-boster.html to see all 1 publications.

Submit a product review to Biocompare.com

Submit a review of this product to Biocompare.com to receive a \$20 Amazon.com giftcard! Your reviews help your fellow scientists make the right decisions. Thank you for your contribution.



Anti-Cytokeratin 7 KRT7 Rabbit Monoclonal Antibody