

Anti-Smooth Muscle Myosin Heavy Chain (SM-MHC) (Leiomyosarcoma & Myoepithelial Cell Marker) MYH11 Monoclonal Antibody

Catalog Number: M02422

About MYH11

Smooth muscle myosin heavy chain (SM-MHC) is a cytoplasmic structural protein, which is a major component of the contractile apparatus in smooth muscle cells. Expression of smooth muscle myosin is developmentally regulated, appearing early in smooth muscle development, and is specific for smooth muscle development. Two isoforms of smooth muscle myosin heavy chain have been identified, designated MHC-1 and MHC-2. The antibody may be useful for the study of breast tumors as the presence of an intact layer of myoepithelial cells is an important feature, which may distinguish benign breast lesions and carcinoma in situ from invasive tumors.

Overview

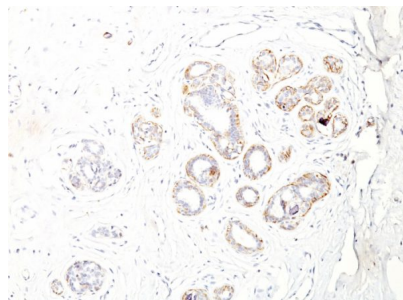
| | |
|----------------------|---|
| Product Name | Anti-Smooth Muscle Myosin Heavy Chain (SM-MHC) (Leiomyosarcoma & Myoepithelial Cell Marker) MYH11 Monoclonal Antibody |
| Reactive Species | Chicken, Cow, Dog, Guinea pig, Human, Pig, Rabbit, Rat, Cat |
| Description | Boster Bio Anti-Smooth Muscle Myosin Heavy Chain (SM-MHC) (Leiomyosarcoma & Myoepithelial Cell Marker) MYH11 Monoclonal Antibody (Catalog # M02422). Tested in Flow Cytometry, IF, IHC applications. This antibody reacts with Human, Cow, Pig, Dog, Cat, Rabbit, Rat, Guinea pig, Chicken. |
| Conjugate | Biotin |
| Application | Flow Cytometry, IF, IHC |
| Clonality | Monoclonal Clone: ID8 |
| Formulation | Prepared in 10mM PBS with 0.05% BSA & 0.05% azide. Also available WITHOUT BSA & azide at 1.0mg/ml. |
| Storage Instructions | Antibody with azide - store at 2 to 8°C. Antibody without azide - store at -20 to -80°C. Antibody is stable for 24 months. Non-hazardous. No MSDS required. |
| Host | Mouse |
| Uniprot ID | P35749 |

Technical Details

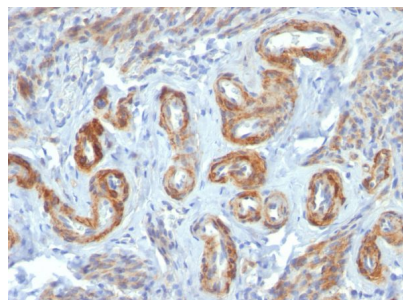
| | |
|----------------------------|---|
| Immunogen | Human uterus extract |
| Predicted Reactive Species | Pig, Rabbit |
| Cross Reactivity | Does not cross-react with primate, avian or amphibian GR. |
| Isotype | IgG1, kappa |

| | |
|---------------------|--|
| Form | Liquid |
| Concentration | Purified antibody with BSA and azide at 200ug/ml |
| Purification | 200ug/ml of antibody purified from Bioreactor Concentrate by Protein A/G. |
| Suggested Dilutions | <p>Dilute the sample so that the expected range of concentrations fall within the detection range of this kit.</p> <p>If the expected range of concentration is unknown, a pilot test should be conducted to decide the optimal dilution ratio for your samples.</p> <p>Some PubMed article(s) citing the expression level of this target are as follows:</p> <p>Boster Bio's internal QC testing used:</p> <p>Flow Cytometry (1-2ug/million cells)</p> <p>Immunofluorescence (1-2ug/ml)</p> <p>Immunohistochemistry (Formalin-fixed) (1-2ug/ml for 30 minutes at RT)(Staining of formalin-fixed tissues requires heating tissue sections in 10mM Tris with 1mM EDTA, pH 9.0, for 45 min at 95&degC followed by cooling at RT for 20 minutes)</p> <p>Optimal dilution for a specific application should be determined.</p> |

Anti-Smooth Muscle Myosin Heavy Chain (SM-MHC) (Leiomyosarcoma & Myoepithelial Cell Marker) MYH11 Monoclonal Antibody (M02422) Images



Formalin-fixed, paraffin-embedded human Breast Carcinoma stained with Anti-SM-MHC Monoclonal Antibody (ID8).



Formalin-fixed, paraffin-embedded human Leiomyosarcoma stained with Anti-SM-MHC Monoclonal Antibody (ID8).

4 Publications Citing This Product

1. PubMed ID: 10.1002/jbm.a.36144, The penetration and phenotype modulation of smooth muscle cells on surface heparin modified poly(ϵ -caprolactone) vascular scaffold
2. PubMed ID: 20593513, All-trans retinoic acid promotes smooth muscle cell differentiation of rabbit bone marrow-derived mesenchymal stem cells
3. PubMed ID: 28643432, Cao, J., Geng, X., Wen, J., Li, Q., Ye, L., Zhang, A.,..., & Gu, Y. (2017). The penetration and phenotype modulation of smooth muscle cells on surface heparin modified poly(ϵ -caprolactone) vascular scaffold. Journal of Biomedical Materials Research....

Visit bosterbio.com/anti-smooth-muscle-myosin-heavy-chain-sm-mhc-leiomyosarcoma-myoepithelial-cell-marker-antibody-m02422-boster.html to see all 4 publications.

Submit a product review to Biocompare.com

Submit a review of this product to Biocompare.com to receive a \$20 Amazon.com giftcard! Your reviews help your fellow scientists make the right decisions. Thank you for your contribution.



Anti-Smooth Muscle Myosin Heavy Chain (SM-MHC) (Leiomyosarcoma & Myoepithelial Cell Marker) MYH11 Monoclonal Antibody