

Anti-EBP50 SLC9A3R1 Rabbit Monoclonal Antibody

Catalog Number: M02427

About SLC9A3R1

F-actin cross-linking protein which is thought to anchor actin to a variety of intracellular structures. This is a bundling protein. Probably involved in vesicular trafficking via its association with the CART complex. The CART complex is necessary for efficient transferrin receptor recycling but not for EGFR degradation.

Overview

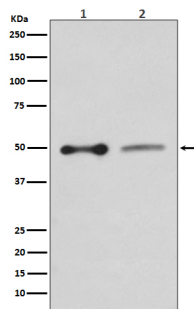
Product Name	Anti-EBP50 SLC9A3R1 Rabbit Monoclonal Antibody
Reactive Species	Human, Rat
Description	Boster Bio Anti-EBP50 SLC9A3R1 Rabbit Monoclonal Antibody catalog # M02427. Tested in WB, IHC applications. This antibody reacts with Human, Rat.
Application	IHC, WB
Clonality	Monoclonal IIH-19
Formulation	Rabbit IgG in phosphate buffered saline, pH 7.4, 150mM NaCl, 0.02% sodium azide and 50% glycerol, 0.4-0.5mg/ml BSA.
Storage Instructions	Store at -20°C for one year. For short term storage and frequent use, store at 4°C for up to one month. Avoid repeated freeze-thaw cycles.
Host	Rabbit
Uniprot ID	O14745

Technical Details

Immunogen	A synthesized peptide derived from human EBP50
Isotype	Rabbit IgG
Form	Liquid
Concentration	Actual concentration vary by lot. Use suggested dilution ratio to decide dilution procedure.
Purification	Affinity-chromatography
Suggested Dilutions	Dilute the sample so that the expected range of concentrations fall within the detection range of this kit. If the expected range of concentration is unknown, a pilot test should be conducted to decide the optimal dilution ratio for your samples. Some PubMed article(s) citing the expression level of this target are as follows: Boster Bio's internal QC testing used:

	WB 1:500-1:2000 IHC 1:50-1:200
--	-----------------------------------

Anti-EBP50 SLC9A3R1 Rabbit Monoclonal Antibody (M02427) Images



Western blot analysis of EBP50 expression in (1) HepG2 cell lysate; (2) PC12 cell lysate.

Submit a product review to Biocompare.com

Submit a review of this product to Biocompare.com to receive a \$20 Amazon.com giftcard! Your reviews help your fellow scientists make the right decisions. Thank you for your contribution.



Anti-EBP50 SLC9A3R1 Rabbit Monoclonal Antibody