

Anti-14-3-3 Beta/Zeta YWHAB Antibody (Monoclonal, 22-li-D8B)

Catalog Number: M02431

About YWHAB

The 90 kDa heat shock protein (HSP90) family of proteins that play an important physiological role. HSP90 is involved in numerous cellular processes but is best known for its association with signal transduction machinery. A recently cloned homolog of HSP90 is the tumor necrosis factor receptor-associated protein (TRAP1). Like HSP90, TRAP1 is found to be associated with numerous proteins involved in diverse actions (1, 2). Immunofluorescence data has shown TRAP1 to be localized in the mitochondria of mammalian cells. This observation and the fact that TRAP1 is shown to have a mitochondrial targeting pre-sequence strongly implicates TRAP1 as a mitochondrial matrix protein (3).

Overview

Product Name	Anti-14-3-3 Beta/Zeta YWHAB Antibody (Monoclonal, 22-li-D8B)
Reactive Species	Human, Mouse, Rat
Description	Boster Bio Anti-14-3-3 Beta/Zeta YWHAB Antibody (Monoclonal, 22-li-D8B) catalog # M02431. Tested in WB applications. This antibody reacts with Human, Mouse, Rat.
Application	WB
Clonality	Monoclonal 22-li-D8B
Formulation	Each vial contains 0.1mM PMSF, 50% glycerol, and 0.09% sodium azide.
Storage Instructions	Store at -20°C for one year. Avoid repeated freeze-thaw cycles.
Host	Mouse
Uniprot ID	P31946

Technical Details

Immunogen	Lysed transformed human amnion cells (AMA).
Predicted Reactive Species	Chimpanzee, Hamster
Cross Reactivity	Detects ~75kDa.
Isotype	IgG1 Kappa
Form	Liquid
Concentration	0.5-1mg/ml, actual concentration vary by lot. Use suggested dilution ratio to decide dilution procedure.
Purification	Protein G affinity purified.
Suggested Dilutions	Dilute the sample so that the expected range of concentrations fall within the detection range of this

kit.

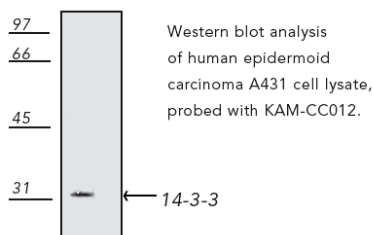
If the expected range of concentration is unknown, a pilot test should be conducted to decide the optimal dilution ratio for your samples.

Some PubMed article(s) citing the expression level of this target are as follows:

Boster Bio's internal QC testing used:

WB, 1ug/ml, ECL, Human, Mouse, Rat

Anti-14-3-3 Beta/Zeta YWHAB Antibody (Monoclonal, 22-li-D8B) (M02431) Images



Western blot analysis of 14-3-3 Beta/Zeta expression in human epidermoid carcinoma A431 whole cell lysates (lane 1). 14-3-3 Beta/Zeta was detected using mouse anti-14-3-3 Beta/Zeta Antigen Affinity purified monoclonal antibody (Catalog # M02431) at 1 ug/ml. The blot was developed using chemiluminescence (ECL) method (Catalog # EK1001).

Submit a product review to Biocompare.com

Submit a review of this product to Biocompare.com to receive a \$20 Amazon.com giftcard! Your reviews help your fellow scientists make the right decisions. Thank you for your contribution.



Anti-14-3-3 Beta/Zeta YWHAB Antibody (Monoclonal, 22-li-D8B)