

Anti-S100A (Melanoma Marker) S100A1 Monoclonal Antibody

Catalog Number: M02503

About S100A1

S100 belongs to the family of calcium binding proteins. S100A and S100B proteins are two members of the S100 family. S100A is composed of an alpha and a beta chain whereas S100B is composed of two beta chains. This antibody is specific against an epitope located on the alpha-chain (i.e. in S-100A and S-100B) but not on the beta-chain of S-100 (i.e. in S-100B). This antibody can be used to localize S-100A in various tissue sections. S-100 protein has been found in normal melanocytes, Langerhans cells, histiocytes, chondrocytes, lipocytes, skeletal and cardiac muscle, epithelial and myoepithelial cells of the breast, salivary and sweat glands. Neoplasms derived from these cells also express S-100 protein. Almost all malignant melanomas and cases of histiocytosis X are positive for S-100 protein.

Overview

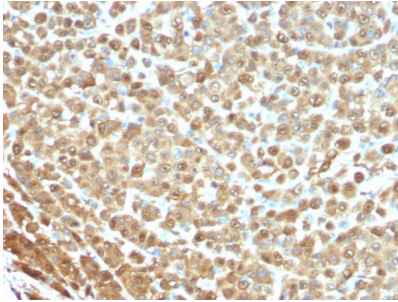
Product Name	Anti-S100A (Melanoma Marker) S100A1 Monoclonal Antibody
Reactive Species	Human
Description	Boster Bio Anti-S100A (Melanoma Marker) S100A1 Monoclonal Antibody (Catalog # M02503). Tested in IF applications. This antibody reacts with Human.
Conjugate	Biotin
Application	IF
Clonality	Monoclonal Clone: S1/61
Formulation	Prepared in 10mM PBS with 0.05% BSA & 0.05% azide. Also available WITHOUT BSA & azide at 1.0mg/ml.
Storage Instructions	Antibody with azide - store at 2 to 8 °C. Antibody without azide - store at -20 to -80 °C. Antibody is stable for 24 months. Non-hazardous. No MSDS required.
Host	Mouse
Uniprot ID	P23297

Technical Details

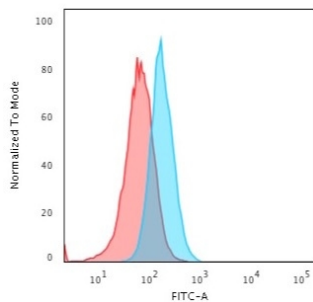
Immunogen	Purified human full-length native S-100 protein conjugated to methylated BSA
Predicted Reactive Species	Pig, Rabbit
Cross Reactivity	Does not cross-react with primate, avian or amphibian GR.
Isotype	IgG1, kappa
Form	Liquid

Concentration	Purified antibody with BSA and azide at 200ug/ml
Purification	200ug/ml of antibody purified from Bioreactor Concentrate by Protein A/G.
Suggested Dilutions	<p>Dilute the sample so that the expected range of concentrations fall within the detection range of this kit.</p> <p>If the expected range of concentration is unknown, a pilot test should be conducted to decide the optimal dilution ratio for your samples.</p> <p>Some PubMed article(s) citing the expression level of this target are as follows:</p> <p>Boster Bio's internal QC testing used:</p> <p>Immunofluorescence (1-2ug/ml)</p> <p>Immunohistology (Formalin-fixed) (1-2ug/ml for 30 minutes at RT) (Staining of formalin-fixed tissues requires boiling tissue sections in 10mM citrate buffer, pH 6.0, for 10-20 min followed by cooling at RT for 20 minutes)</p> <p>Optimal dilution for a specific application should be determined.</p>

Anti-S100A (Melanoma Marker) S100A1 Monoclonal Antibody (M02503) Images



Formalin-fixed, paraffin-embedded human Melanoma stained with Anti-S100A1 Mouse Monoclonal Antibody (S1/61)



Flow Cytometric analysis of T98G cells using Anti-S100A1 Mouse Monoclonal Antibody (S1/61) followed by Goat anti-mouse IgG-CF488 (Blue); Isotype Control (Red).

1 Publications Citing This Product

1. PubMed ID: 21660959, Yi M, Yang J, Chen X, Li J, Li X, Wang L, Tan Y, Xiong W, Zhou M, Mccarthy Jb, Li G, Xiang B, Xie H. J Cell Physiol. 2011 Sep;226(9):2360-9. Doi: 10.1002/Jcp.22568. Rassf1A Suppresses Melanoma Development By Modulating Apoptosis And Cell-Cycle Pro...

Visit bosterbio.com/anti-s100a-melanoma-marker-antibody-m02503-boster.html to see all 1 publications.

Submit a product review to Biocompare.com

Submit a review of this product to Biocompare.com to receive a \$20 Amazon.com giftcard! Your reviews help your fellow scientists make the right decisions. Thank you for your contribution.



Anti-S100A (Melanoma Marker) S100A1 Monoclonal Antibody