

Anti-RNA Helicase A Rabbit Monoclonal Antibody

Catalog Number: M02550

About DHX9

F-actin cross-linking protein which is thought to anchor actin to a variety of intracellular structures. This is a bundling protein. Probably involved in vesicular trafficking via its association with the CART complex. The CART complex is necessary for efficient transferrin receptor recycling but not for EGFR degradation.

Overview

Product Name	Anti-RNA Helicase A Rabbit Monoclonal Antibody
Reactive Species	Human, Mouse, Rat
Description	Boster Bio Anti-RNA Helicase A Rabbit Monoclonal Antibody catalog # M02550. Tested in WB, IHC, ICC/IF, Flow Cytometry applications. This antibody reacts with Human, Mouse, Rat.
Application	Flow Cytometry, IF, IHC, ICC, WB
Clonality	Monoclonal AEEH-4
Formulation	Rabbit IgG in phosphate buffered saline, pH 7.4, 150mM NaCl, 0.02% sodium azide and 50% glycerol, 0.4-0.5mg/ml BSA.
Storage Instructions	Store at -20°C for one year. For short term storage and frequent use, store at 4°C for up to one month. Avoid repeated freeze-thaw cycles.
Host	Rabbit
Uniprot ID	Q08211

Technical Details

Immunogen	A synthesized peptide derived from human RNA Helicase A
Isotype	Rabbit IgG
Form	Liquid
Concentration	Actual concentration vary by lot. Use suggested dilution ratio to decide dilution procedure.
Purification	Affinity-chromatography
Suggested Dilutions	Dilute the sample so that the expected range of concentrations fall within the detection range of this kit. If the expected range of concentration is unknown, a pilot test should be conducted to decide the optimal dilution ratio for your samples. Some PubMed article(s) citing the expression level of this target are as follows: Boster Bio's internal QC testing used:

	WB 1:1000-1:5000 IHC 1:50-1:200 ICC/IF 1:50-1:200 FC 1:20
--	--

Anti-RNA Helicase A Rabbit Monoclonal Antibody (M02550) Images

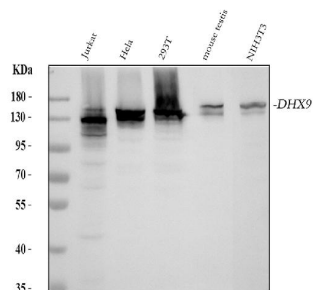


Figure 1. Western blot analysis of RNA Helicase A using anti-RNA Helicase A antibody (M02550).

Electrophoresis was performed on a 5-20% SDS-PAGE gel at 70V (Stacking gel) / 90V (Resolving gel) for 2-3 hours. The sample well of each lane was loaded with 30 ug of sample under reducing conditions.

Lane 1: human Jurkat whole cell lysates,

Lane 2: human Hela whole cell lysates,

Lane 3: human 293T whole cell lysates,

Lane 4: mouse testis tissue lysates,

Lane 5: mouse NIH/3T3 whole cell lysates.

After electrophoresis, proteins were transferred to a nitrocellulose membrane at 150 mA for 50-90 minutes.

Blocked the membrane with 5% non-fat milk/TBS for 1.5

hour at RT. The membrane was incubated with rabbit anti-

RNA Helicase A antigen affinity purified monoclonal antibody

(Catalog # M02550) at 1:1000 overnight at 4°C, then

washed with TBS-0.1%Tween 3 times with 5 minutes each

and probed with a goat anti-rabbit IgG-HRP secondary

antibody at a dilution of 1:5000 for 1.5 hour at RT. The

signal is developed using an Enhanced Chemiluminescent

detection (ECL) kit (Catalog # EK1002) with Tanon 5200

system. A specific band was detected for RNA Helicase A at

approximately 141 kDa. The expected band size for RNA

Helicase A is at 141 kDa.

Submit a product review to Biocompare.com

Submit a review of this product to Biocompare.com to receive a \$20 Amazon.com giftcard! Your reviews help your fellow scientists make the right decisions. Thank you for your contribution.



Anti-RNA Helicase A Rabbit Monoclonal Antibody