

## Anti-Cytokeratin 20 KRT20 Rabbit Monoclonal Antibody

Catalog Number: M02828

### About KRT20

F-actin cross-linking protein which is thought to anchor actin to a variety of intracellular structures. This is a bundling protein. Probably involved in vesicular trafficking via its association with the CART complex. The CART complex is necessary for efficient transferrin receptor recycling but not for EGFR degradation.

### Overview

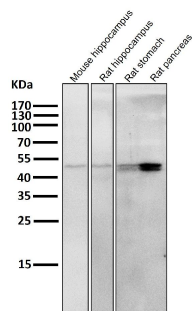
Product Name	Anti-Cytokeratin 20 KRT20 Rabbit Monoclonal Antibody
Reactive Species	Human, Rat
Description	Boster Bio Anti-Cytokeratin 20 KRT20 Rabbit Monoclonal Antibody catalog # M02828. Tested in WB, IHC, ICC/IF, IP, Flow Cytometry applications. This antibody reacts with Human, Rat.
Application	Flow Cytometry, IP, IF, IHC, ICC, WB
Clonality	Monoclonal CDI-11
Formulation	Rabbit IgG in phosphate buffered saline, pH 7.4, 150mM NaCl, 0.02% sodium azide and 50% glycerol, 0.4-0.5mg/ml BSA.
Storage Instructions	Store at -20°C for one year. For short term storage and frequent use, store at 4°C for up to one month. Avoid repeated freeze-thaw cycles.
Host	Rabbit
Uniprot ID	P35900

### Technical Details

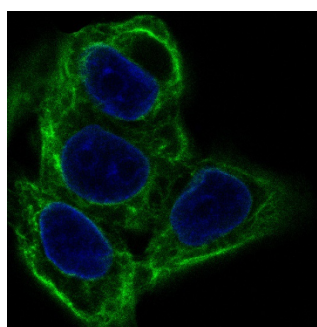
Immunogen	A synthesized peptide derived from human Cytokeratin 20
Isotype	Rabbit IgG
Form	Liquid
Concentration	Actual concentration vary by lot. Use suggested dilution ratio to decide dilution procedure.
Purification	Affinity-chromatography
Suggested Dilutions	Dilute the sample so that the expected range of concentrations fall within the detection range of this kit. If the expected range of concentration is unknown, a pilot test should be conducted to decide the optimal dilution ratio for your samples. Some PubMed article(s) citing the expression level of this target are as follows: Boster Bio's internal QC testing used:

	WB 1:500-1:2000 IHC 1:50-1:200 ICC/IF 1:50-1:200 IP 1:30 FC 1:50
--	--

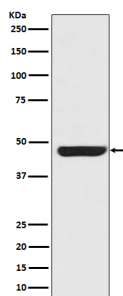
## Anti-Cytokeratin 20 KRT20 Rabbit Monoclonal Antibody (M02828) Images



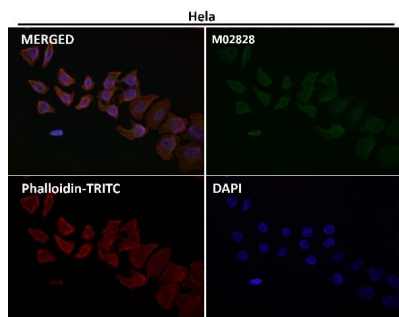
All lanes use the Antibody at 1:5K dilution for 1 hour at room temperature.



Immunofluorescent analysis of HeLa cells, using Cytokeratin 20 Antibody .

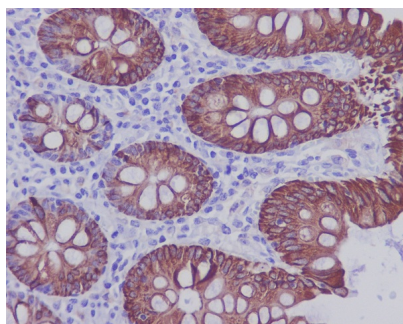


Western blot analysis of Cytokeratin 20 expression in SW480 cell lysate.



Immunofluorescent analysis using the Antibody at 1:50 dilution.

Immunohistochemical analysis of paraffin-embedded human colon, using Cytokeratin 20 Antibody.



## Submit a product review to Biocompare.com

Submit a review of this product to Biocompare.com to receive a \$20 Amazon.com giftcard! Your reviews help your fellow scientists make the right decisions. Thank you for your contribution.



Anti-Cytokeratin 20 KRT20 Rabbit Monoclonal Antibody