

## Anti-K48-linkage Specific Ubiquitin UBB Rabbit Monoclonal Antibody

Catalog Number: M02848-1

### About UBB

F-actin cross-linking protein which is thought to anchor actin to a variety of intracellular structures. This is a bundling protein. Probably involved in vesicular trafficking via its association with the CART complex. The CART complex is necessary for efficient transferrin receptor recycling but not for EGFR degradation.

### Overview

Product Name	Anti-K48-linkage Specific Ubiquitin UBB Rabbit Monoclonal Antibody
Reactive Species	Human, Mouse, Rat
Description	Boster Bio Anti-K48-linkage Specific Ubiquitin UBB Rabbit Monoclonal Antibody catalog # M02848-1. Tested in WB, IHC, ICC/IF, Flow Cytometry applications. This antibody reacts with Human, Mouse, Rat.
Application	Flow Cytometry, IF, IHC, ICC, WB
Clonality	Monoclonal IBH-21
Formulation	Rabbit IgG in phosphate buffered saline, pH 7.4, 150mM NaCl, 0.02% sodium azide and 50% glycerol, 0.4-0.5mg/ml BSA.
Storage Instructions	Store at -20°C for one year. For short term storage and frequent use, store at 4°C for up to one month. Avoid repeated freeze-thaw cycles.
Host	Rabbit
Uniprot ID	P0CG47

### Technical Details

Immunogen	A synthesized peptide derived from human K48-linkage Specific Ubiquitin
Isotype	Rabbit IgG
Form	Liquid
Concentration	Actual concentration vary by lot. Use suggested dilution ratio to decide dilution procedure.
Purification	Affinity-chromatography
Suggested Dilutions	Dilute the sample so that the expected range of concentrations fall within the detection range of this kit. If the expected range of concentration is unknown, a pilot test should be conducted to decide the optimal dilution ratio for your samples. Some PubMed article(s) citing the expression level of this target are as follows:

Boster Bio's internal QC testing used:

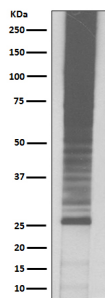
WB 1:100-1:500

IHC 1:50-1:200

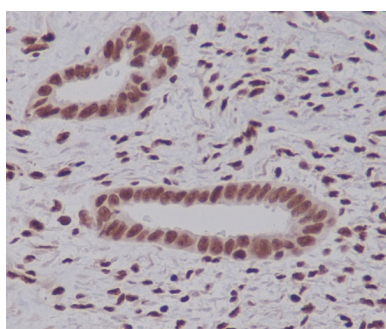
ICC/IF 1:50-1:200

FC 1:50

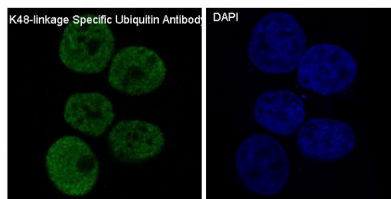
## Anti-K48-linkage Specific Ubiquitin UBB Rabbit Monoclonal Antibody (M02848-1) Images



Western blot analysis of Ubiquitin expression in Jurkat cell lysate.



Immunohistochemical analysis of paraffin-embedded human endometrium carcinoma, using K48-linkage Specific Ubiquitin Antibody.



Immunofluorescent analysis of MCF-7 cells, using K48-linkage Specific Ubiquitin Antibody.

### Submit a product review to Biocompare.com

Submit a review of this product to Biocompare.com to receive a \$20 Amazon.com giftcard! Your reviews help your fellow scientists make the right decisions. Thank you for your contribution.



Anti-K48-linkage Specific Ubiquitin UBB Rabbit Monoclonal Antibody