

Anti-MEK3/MEK6 MAP2K3 Rabbit Monoclonal Antibody

Catalog Number: M02916

About MAP2K3

F-actin cross-linking protein which is thought to anchor actin to a variety of intracellular structures. This is a bundling protein. Probably involved in vesicular trafficking via its association with the CART complex. The CART complex is necessary for efficient transferrin receptor recycling but not for EGFR degradation.

Overview

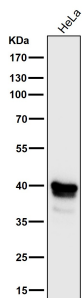
Product Name	Anti-MEK3/MEK6 MAP2K3 Rabbit Monoclonal Antibody
Reactive Species	Human, Mouse, Rat
Description	Boster Bio Anti-MEK3/MEK6 MAP2K3 Rabbit Monoclonal Antibody catalog # M02916. Tested in WB, IHC, ICC/IF, IP, Flow Cytometry applications. This antibody reacts with Human, Mouse, Rat.
Application	Flow Cytometry, IP, IF, IHC, ICC, WB
Clonality	Monoclonal HDA-13
Formulation	Rabbit IgG in phosphate buffered saline, pH 7.4, 150mM NaCl, 0.02% sodium azide and 50% glycerol, 0.4-0.5mg/ml BSA.
Storage Instructions	Store at -20°C for one year. For short term storage and frequent use, store at 4°C for up to one month. Avoid repeated freeze-thaw cycles.
Host	Rabbit
Uniprot ID	P46734/P52564

Technical Details

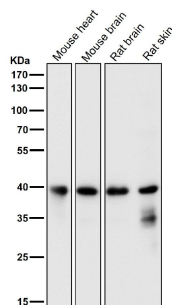
Immunogen	A synthesized peptide derived from human MEK3/MEK6
Isotype	Rabbit IgG
Form	Liquid
Concentration	Actual concentration vary by lot. Use suggested dilution ratio to decide dilution procedure.
Purification	Affinity-chromatography
Suggested Dilutions	Dilute the sample so that the expected range of concentrations fall within the detection range of this kit. If the expected range of concentration is unknown, a pilot test should be conducted to decide the optimal dilution ratio for your samples. Some PubMed article(s) citing the expression level of this target are as follows: Boster Bio's internal QC testing used:

	WB 1:500-1:1000 IHC 1:50-1:200 ICC/IF 1:100-1:500 IP 1:50 FC 1:50
--	---

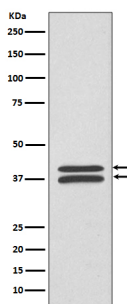
Anti-MEK3/MEK6 MAP2K3 Rabbit Monoclonal Antibody (M02916) Images



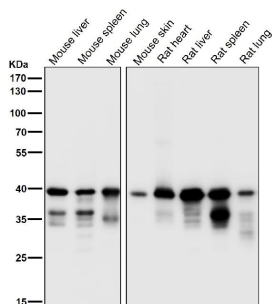
All lanes use the Antibody at 1:6K dilution for 1 hour at room temperature.



All lanes use the Antibody at 1:6K dilution for 1 hour at room temperature.

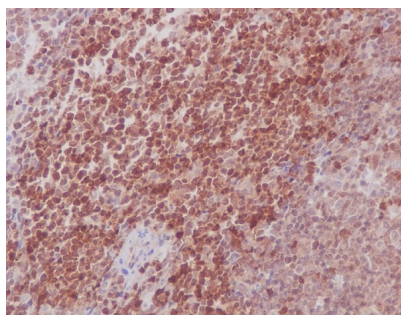
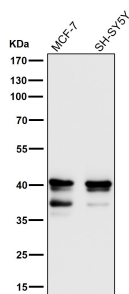


Western blot analysis of MEK3/MEK6 expression in HeLa cell lysate.

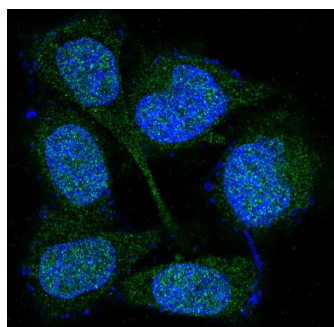


All lanes use the Antibody at 1:6K dilution for 1 hour at room temperature.

All lanes use the Antibody at 1:6K dilution for 1 hour at room temperature.



Immunohistochemical analysis of paraffin-embedded mouse spleen, using MEK3/MEK6 Antibody.



Immunofluorescent analysis of HeLa cells, using MEK3/MEK6 Antibody.

1 Publications Citing This Product

1. PubMed ID: 24112539, Xu G, Zhang Y, Wei J, Jia W, Ge Z, Zhang Z, Liu X. BMC Cancer. 2013 Oct 10;13:469. Doi: 10.1186/1471-2407-13-469. MicroRNA-21 Promotes Hepatocellular Carcinoma HepG2 Cell Proliferation Through Repression Of Mitogen-Activated Protein Kinase-Kinase 3.

Visit bosterbio.com/anti-mek3-mek6-rabbit-monoclonal-antibody-m02916-boster.html to see all 1 publications.

Submit a product review to Biocompare.com

Submit a review of this product to Biocompare.com to receive a \$20 Amazon.com giftcard! Your reviews help your fellow scientists make the right decisions. Thank you for your contribution.



Anti-MEK3/MEK6 MAP2K3 Rabbit Monoclonal Antibody