

Anti-NSE gamma (Neuron Specific Enolase, gamma) (Neuroendocrine Marker) ENO2 Monoclonal Antibody

Catalog Number: M02930

About ENO2

Recognizes a protein of about 50kDa, which is identified as gamma-enolase. Three isoenzymes of enolases are identified, alpha, beta and gamma. Alpha-isoform is expressed in most tissues, whereas beta-form is expressed predominantly in muscle tissue whereas gamma-enolase is found only in nervous tissue. These isoforms exist as both homodimers and heterodimers, and they play a role in converting phosphoglyceric acid to phosphoenolpyruvic acid in the glycolytic pathway. NSE-gamma is a useful marker to identify peripheral nerves and tumors of neuro-endocrine origins, such as pheochromocytomas. It is usually employed in combination with other markers such as Synaptophysin, Chromogranin A, and Neurofilament.

Overview

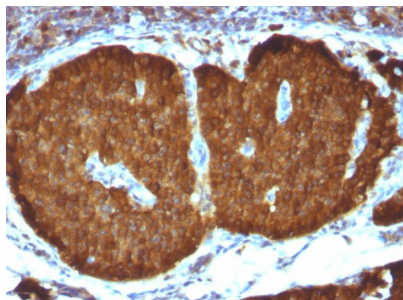
Product Name	Anti-NSE gamma (Neuron Specific Enolase, gamma) (Neuroendocrine Marker) ENO2 Monoclonal Antibody
Reactive Species	Human, Mouse, Rat
Description	Boster Bio Anti-NSE gamma (Neuron Specific Enolase, gamma) (Neuroendocrine Marker) ENO2 Monoclonal Antibody (Catalog # M02930). Tested in WB, IHC applications. This antibody reacts with Human, Mouse, Rat.
Conjugate	Biotin
Application	IHC, WB
Clonality	Monoclonal Clone: ENO2/1375
Formulation	Prepared in 10mM PBS with 0.05% BSA & 0.05% azide. Also available WITHOUT BSA & azide at 1.0mg/ml.
Storage Instructions	Antibody with azide - store at 2 to 8°C. Antibody without azide - store at -20 to -80°C. Antibody is stable for 24 months. Non-hazardous. No MSDS required.
Host	Mouse
Uniprot ID	P09104

Technical Details

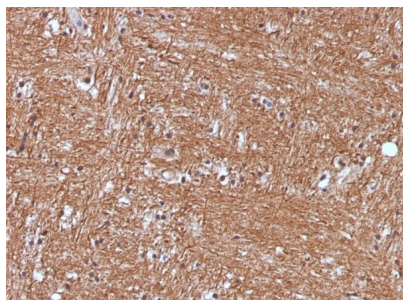
Immunogen	A synthetic peptide of human NSE gamma (around aa416-433) (exact sequence is proprietary)
Predicted Reactive Species	Pig, Rabbit
Cross Reactivity	Does not cross-react with primate, avian or amphibian GR.
Isotype	IgG2b, kappa

Form	Liquid
Concentration	Purified antibody with BSA and azide at 200ug/ml
Purification	200ug/ml of antibody purified from Bioreactor Concentrate by Protein A/G.
Suggested Dilutions	<p>Dilute the sample so that the expected range of concentrations fall within the detection range of this kit.</p> <p>If the expected range of concentration is unknown, a pilot test should be conducted to decide the optimal dilution ratio for your samples.</p> <p>Some PubMed article(s) citing the expression level of this target are as follows:</p> <p>Boster Bio's internal QC testing used:</p> <p>Western Blot (1-2ug/ml)</p> <p>Immunohistochemistry (Formalin-fixed) (0.2-0.4ug/ml for 30 min at RT) (Staining of formalin-fixed tissues requires heating tissue sections in 10mM Tris with 1mM EDTA, pH 9.0, for 45 min at 95&degC followed by cooling at RT for 20 minutes)</p> <p>Optimal dilution for a specific application should be determined.</p>

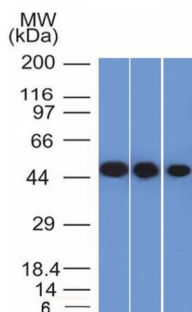
Anti-NSE gamma (Neuron Specific Enolase, gamma) (Neuroendocrine Marker) ENO2 Monoclonal Antibody (M02930) Images



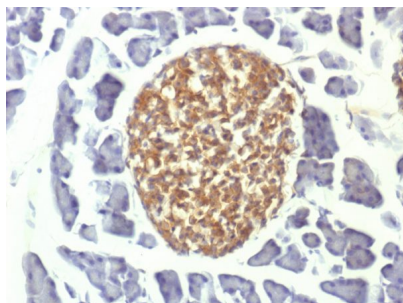
Formalin-fixed, paraffin-embedded human Pheochromocytoma stained with Anti-NSE gamma Monoclonal Antibody (ENO2/1375).



Formalin-fixed, paraffin-embedded human Cerebellum stained with Anti-NSE gamma Monoclonal Antibody (ENO2/1375).

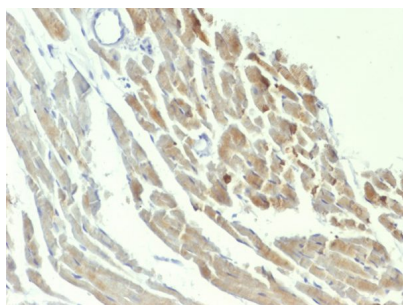


Western Blot of Y79, HeLa and HepG2 cell lysate using Anti-NSE, gamma Monoclonal Antibody (ENO2/1375).



Formalin-fixed, paraffin-embedded Mouse Pancreas stained with Anti-NSE gamma Mouse Monoclonal Antibody (ENO2/1375).

Formalin-fixed, paraffin-embedded Rat Heart stained with Anti-NSE gamma Mouse Monoclonal Antibody (ENO2/1375).



17 Publications Citing This Product

1. PubMed ID: 10.3892/mmr.2018.8960, High glucose upregulates myosin light chain kinase to induce microfilament cytoskeleton rearrangement in hippocampal neurons
2. PubMed ID: 10.1139/bcb-2019-0188, MicroRNA-24 alleviates isoflurane-induced neurotoxicity in rat hippocampus via attenuation of oxidative stress
3. PubMed ID: -, Xu,Y.,Liu,S.,Zhu,L.,Dai,L.,Qian,W.,Zhang,J. ... Pan,W.(2021).Green tea protects against hippocampal neuronal apoptosis in diabetic encephalopathy by inhibiting JNK/MLCK signaling.Molecular Medicine Reports,24,575.<https://doi.org/10.3892/mmr.2021.12214>

Visit [bosterbio.com/anti-nse-gamma-neuron-specific-enolase-gamma-neuroendocrine-marker-antibody-m02930-boster.html](https://www.bosterbio.com/anti-nse-gamma-neuron-specific-enolase-gamma-neuroendocrine-marker-antibody-m02930-boster.html) to see all 17 publications.

Submit a product review to Biocompare.com

Submit a review of this product to Biocompare.com to receive a \$20 Amazon.com giftcard! Your reviews help your fellow scientists make the right decisions. Thank you for your contribution.



Anti-NSE gamma (Neuron Specific Enolase, gamma) (Neuroendocrine Marker) ENO2 Monoclonal Antibody