

Anti-Calbindin Antibody

Catalog Number: M03047-2

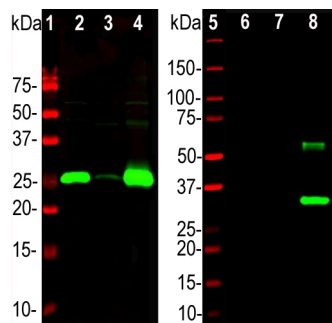
Overview

Product Name	Anti-Calbindin Antibody
Reactive Species	Bovine, Human, Mouse, Rat
Description	Boster Bio Anti-Calbindin Antibody catalog # M03047-2. Tested in IF, IHC, WB applications. This antibody reacts with Bovine, Human, Mouse, Rat.
Application	IF, IHC, WB
Clonality	Polyclonal
Formulation	Supplied as an aliquot of IgY preparation plus 5mM NaN ₃
Storage Instructions	Store at -20°C for one year. For short term storage and frequent use, store at 4°C for up to one month. Avoid repeated freeze-thaw cycles.
Host	Chicken
Uniprot ID	P05937

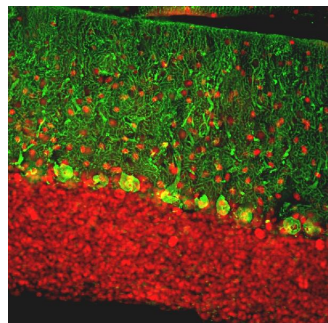
Technical Details

Immunogen	Full-length recombinant human protein
Concentration	0.5-1mg/ml, actual concentration vary by lot. Use suggested dilution ratio to decide dilution procedure.
Suggested Dilutions	<p>Dilute the sample so that the expected range of concentrations fall within the detection range of this kit.</p> <p>If the expected range of concentration is unknown, a pilot test should be conducted to decide the optimal dilution ratio for your samples.</p> <p>Some PubMed article(s) citing the expression level of this target are as follows:</p> <p>Boster Bio's internal QC testing used:</p> <p>WB: 1:1,000-1:5,000. IF/ICC or IHC: 1:1,000-1:5,000.</p>

Anti-Calbindin Antibody (M03047-2) Images



Western blot analysis of different tissue lysates and recombinant protein solutions using chicken pAb to calbindin, M03047-2, dilution 1:5,000 in green: [1] protein standard (red), [2] rat cerebellum, [3] pig hippocampus, [4] cow cerebellum, [5] protein standard (red). Next lanes are full length recombinant human proteins, [6] Parvalbumin, [7] Calretinin, [8] Calbindin. Bands at 25kDa in tissue lysates and ~30 kDa in protein solutions correspond to calbindin, the recombinant form being slightly larger due to the presence of a His tag and other vector derived sequence. The M03047-2 antibody specifically recognizes calbindin protein and does not react with the closely related proteins parvalbumin and calretinin.



Immunofluorescent analysis of rat cerebellum section stained with chicken pAb to calbindin, M03047-2, dilution 1:2,000, in green, and costained with rabbit pAb to MeCP2, dilution 1:5,000, in red. Following transcardial perfusion with 4% paraformaldehyde, brain was post fixed for 24 hours, cut to 45M, and free-floating sections were stained with above antibodies. Calbindin, often used as a Purkinje cell marker, is prominently detected in dendrites and perikarya of these cells in the cerebellar molecular layer. The MeCP2 antibody selectively stains nuclei of neuronal cells.

1 Publications Citing This Product

1. PubMed ID: 10.1016/j.celrep.2019.09.012, Inappropriate Intrusion of an Axonal Mitochondrial Anchor into Dendrites Causes Neurodegeneration

Visit bosterbio.com/anti-calbindin-antibody-m03047-2-boster.html to see all 1 publications.

Submit a product review to Biocompare.com

Submit a review of this product to Biocompare.com to receive a \$20 Amazon.com giftcard! Your reviews help your fellow scientists make the right decisions. Thank you for your contribution.



Anti-Calbindin Antibody