

## Anti-Clathrin Heavy Chain / CHC Reference Antibody (Academia Sinica patent anti-Clathrin Heavy Chain

Catalog Number: M03134-3

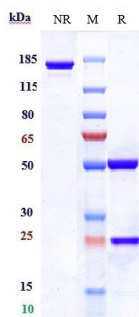
### Overview

|                      |   |
|----------------------|---|
| Product Name         | Anti-Clathrin Heavy Chain / CHC Reference Antibody (Academia Sinica patent anti-Clathrin Heavy Chain  |
| Reactive Species     | Human   |
| Description          | Boster Bio Anti-Clathrin Heavy Chain / CHC Reference Antibody (Academia Sinica patent anti-Clathrin Heavy Chain (Catalog # M03134-3). Tested in Flow Cytometry, ELISA, FTA. This antibody reacts with Human. Endotoxin: < 0.1018EU/ug,determined by LAL method. Expression system: CHO Cell |
| Application          | ELISA, Flow Cytometry, Functional Assay, Kinetics   |
| Clonality            | Monoclonal  |
| Formulation          | Purified monoclonal antibody supplied in PBS, pH6.0, without preservative.This antibody is purified through a protein A column.   |
| Storage Instructions | Maintain refrigerated at 2-8°C for up to 2 weeks. For long-term storage, aliquot and store at -20°C to avoid repeated freeze-thaw cycles.   |
| Uniprot ID           | Q00610  |

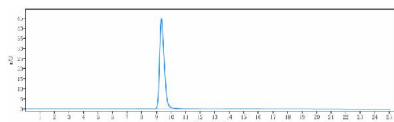
### Technical Details

|               |        |
|---------------|--------|
| Isotype       | IgG1   |
| Form          | Liquid |
| Concentration | 1mg/ml |

## Anti-Clathrin Heavy Chain / CHC Reference Antibody (Academia Sinica patent anti-Clathrin Heavy Chain (M03134-3) Images



Anti-Clathrin Heavy Chain/CHC Reference Antibody (Academia Sinica patent anti-Clathrin Heavy Chain) on SDS-PAGE under reducing (R) condition. The gel was stained with Coomassie Blue. The purity of the protein is greater than 90%



The purity of Anti-Clathrin Heavy Chain/CHC Reference Antibody (Academia Sinica patent anti-Clathrin Heavy Chain) is more than 95%

### Submit a product review to Biocompare.com

Submit a review of this product to Biocompare.com to receive a \$20 Amazon.com giftcard! Your reviews help your fellow scientists make the right decisions. Thank you for your contribution.



Anti-Clathrin Heavy Chain / CHC Reference Antibody (Academia Sinica patent anti-Clathrin Heavy Chain