

Anti-Glutamine Synthetase GLUL Rabbit Monoclonal Antibody

Catalog Number: M03191

About GLUL

Receptor for bradykinin. It is associated with G proteins that activate a phosphatidylinositol-calcium second messenger system.

Overview

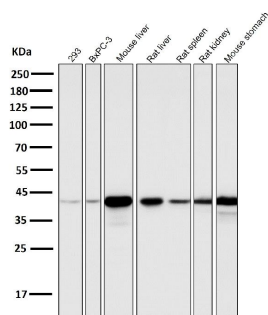
Product Name	Anti-Glutamine Synthetase GLUL Rabbit Monoclonal Antibody
Reactive Species	Human, Mouse, Rat
Description	Boster Bio Anti-Glutamine Synthetase GLUL Rabbit Monoclonal Antibody catalog # M03191. Tested in WB, IHC, IP, Flow Cytometry applications. This antibody reacts with Human, Mouse, Rat.
Application	Flow Cytometry, IP, IHC, WB
Clonality	Monoclonal CCH-7
Formulation	Rabbit IgG in phosphate buffered saline, pH 7.4, 150mM NaCl, 0.02% sodium azide and 50% glycerol, 0.4-0.5mg/ml BSA.
Storage Instructions	Store at -20°C for one year. For short term storage and frequent use, store at 4°C for up to one month. Avoid repeated freeze-thaw cycles.
Host	Rabbit
Uniprot ID	P15104

Technical Details

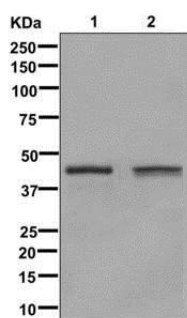
Immunogen	A synthesized peptide derived from human Glutamine Synthetase
Isotype	Rabbit IgG
Form	Liquid
Concentration	Actual concentration vary by lot. Use suggested dilution ratio to decide dilution procedure.
Purification	Affinity-chromatography
Suggested Dilutions	<p>Dilute the sample so that the expected range of concentrations fall within the detection range of this kit.</p> <p>If the expected range of concentration is unknown, a pilot test should be conducted to decide the optimal dilution ratio for your samples.</p> <p>Some PubMed article(s) citing the expression level of this target are as follows:</p> <p>Boster Bio's internal QC testing used:</p> <p>WB 1:500-1:2000 IHC 1:50-1:200 IP 1:50</p>

FC 1:50

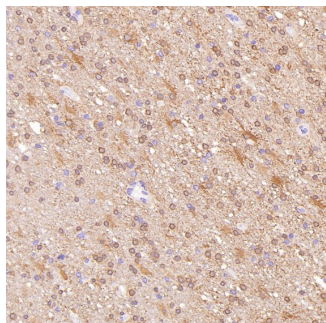
Anti-Glutamine Synthetase GLUL Rabbit Monoclonal Antibody (M03191) Images



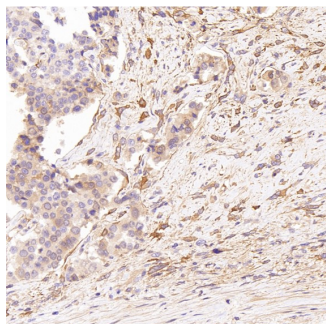
All lanes use the Antibody at 1:5K dilution for 1 hour at room temperature.



Western blot analysis of Glutamine Synthetase expression in (1) Jurkat cell lysate; (2) HeLa cell lysate.

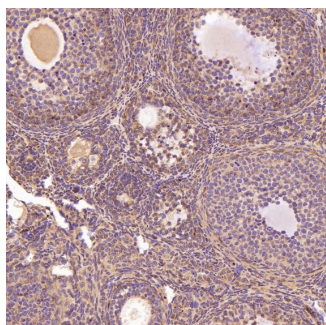
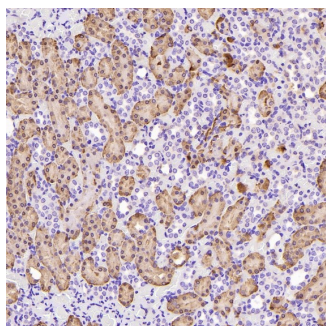


Immunohistochemical analysis of paraffin-embedded Human glioblastoma, using the Antibody at 1:250 dilution.

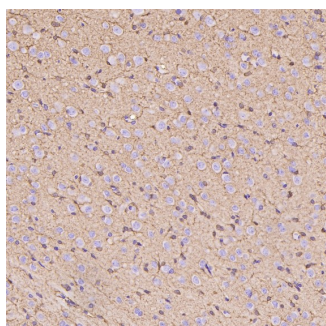


Immunohistochemical analysis of paraffin-embedded Human prostate cancer, using the Antibody at 1:250 dilution.

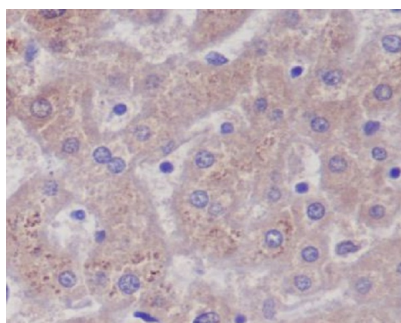
Immunohistochemical analysis of paraffin-embedded Rat kidney, using the Antibody at 1:400 dilution.



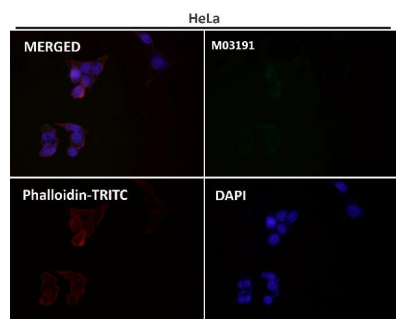
Immunohistochemical analysis of paraffin-embedded Mouse ovary, using the Antibody at 1:400 dilution.



Immunohistochemical analysis of paraffin-embedded Rat cerebral cortex, using the Antibody at 1:400 dilution.



Immunohistochemical analysis of paraffin-embedded human liver, using Glutamine Synthetase Antibody .



Immunofluorescent analysis using the Antibody at 1:50 dilution.

Submit a product review to Biocompare.com

Submit a review of this product to Biocompare.com to receive a \$20 Amazon.com giftcard! Your reviews help your fellow scientists make the right decisions. Thank you for your contribution.



Anti-Glutamine Synthetase GLUL Rabbit Monoclonal Antibody