

Anti-PRAS40 AKT1S1 Monoclonal Antibody

Catalog Number: M03629-1

About AKT1S1

Receptor for bradykinin. It is associated with G proteins that activate a phosphatidylinositol-calcium second messenger system.

Overview

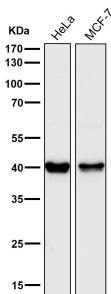
Product Name	Anti-PRAS40 AKT1S1 Monoclonal Antibody
Reactive Species	Human, Mouse, Rat
Description	Boster Bio Anti-PRAS40 AKT1S1 Monoclonal Antibody catalog # M03629-1. Tested in WB, IP applications. This antibody reacts with Human, Mouse, Rat.
Application	IP, WB
Clonality	Monoclonal ACHD-1
Formulation	Rabbit IgG in phosphate buffered saline, pH 7.4, 150mM NaCl, 0.02% sodium azide and 50% glycerol, 0.4-0.5mg/ml BSA.
Storage Instructions	Store at -20°C for one year. For short term storage and frequent use, store at 4°C for up to one month. Avoid repeated freeze-thaw cycles.
Host	Rabbit
Uniprot ID	Q96B36

Technical Details

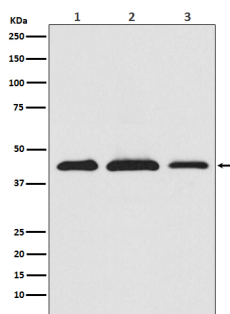
Immunogen	A synthesized peptide derived from human PRAS40 Many growth factors and hormones induce the phosphoinositide 3-kinase signaling pathway, which results in the activation of downstream effector proteins such as the serine/threonine kinase Akt. One known Akt substrate is a 40 kDa, proline-rich protein (PRAS40) that binds to 14-3-3 protein. PRAS40 also binds mTOR to transduce Akt signals to the mTOR complex.
Isotype	Rabbit IgG
Form	Liquid
Concentration	Actual concentration vary by lot. Use suggested dilution ratio to decide dilution procedure.
Purification	Affinity-chromatography
Suggested Dilutions	Dilute the sample so that the expected range of concentrations fall within the detection range of this kit. If the expected range of concentration is unknown, a pilot test should be conducted to decide the optimal dilution ratio for your samples. Some PubMed article(s) citing the expression level of this target are as follows:

Boster Bio's internal QC testing used:
WB 1:500-1:2000
IP 1:50

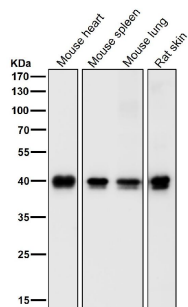
Anti-PRAS40 AKT1S1 Monoclonal Antibody (M03629-1) Images



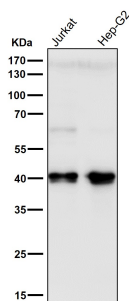
All lanes use the Antibody at 1:3K dilution for 1 hour at room temperature.



Western blot analysis of PRAS40 expression in (1) HeLa cell lysate; (2) RAW 264.7 cell lysate; (3) PC12 cell lysate.



All lanes use the Antibody at 1:3K dilution for 1 hour at room temperature.



All lanes use the Antibody at 1:3K dilution for 1 hour at room temperature.

Submit a product review to Biocompare.com

Submit a review of this product to Biocompare.com to receive a \$20 Amazon.com giftcard! Your reviews help your fellow scientists make the right decisions. Thank you for your contribution.



Anti-PRAS40 AKT1S1 Monoclonal Antibody