

Anti-CD162 (Selectin P Ligand) SELPLG Monoclonal Antibody

Catalog Number: M03674

About SELPLG

CD162 glycoprotein functions as a high affinity counter-receptor for the cell adhesion molecules P-, E- and L- selectin expressed on myeloid cells and stimulated T lymphocytes. As such, this protein plays a critical role in leukocyte trafficking during inflammation by tethering of leukocytes to activated platelets or endothelia expressing selectins. This protein requires two post-translational modifications, tyrosine sulfation and the addition of the sialyl Lewis x tetrasaccharide (sLex) to its O-linked glycans, for its high-affinity binding activity. Aberrant expression of this gene and polymorphisms in this gene are associated with defects in the innate and adaptive immune response.

Overview

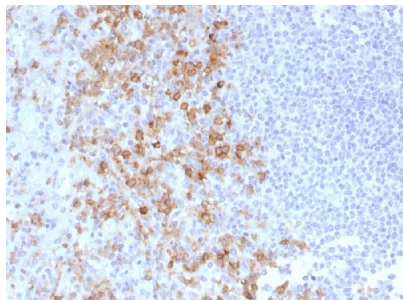
Product Name	Anti-CD162 (Selectin P Ligand) SELPLG Monoclonal Antibody
Reactive Species	Human
Description	Boster Bio Anti-CD162 (Selectin P Ligand) SELPLG Monoclonal Antibody (Catalog # M03674). Tested in IHC applications. This antibody reacts with Human.
Conjugate	Biotin
Application	IHC
Clonality	Monoclonal Clone: PSGL1/1601
Formulation	Prepared in 10mM PBS with 0.05% BSA & 0.05% azide. Also available WITHOUT BSA & azide at 1.0mg/ml.
Storage Instructions	Antibody with azide - store at 2 to 8°C. Antibody without azide - store at -20 to -80°C. Antibody is stable for 24 months. Non-hazardous. No MSDS required.
Host	Mouse
Uniprot ID	Q14242

Technical Details

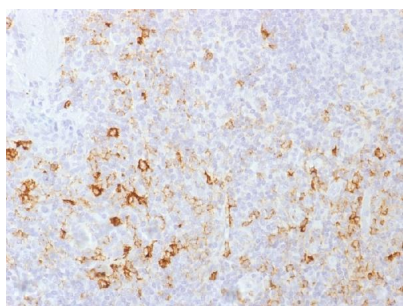
Immunogen	Recombinant human SELPLG (CD162) protein
Predicted Reactive Species	Pig, Rabbit
Cross Reactivity	Does not cross-react with primate, avian or amphibian GR.
Isotype	IgG1, kappa
Form	Liquid
Concentration	Purified antibody with BSA and azide at 200ug/ml

Purification	200ug/ml of antibody purified from Bioreactor Concentrate by Protein A/G.
Suggested Dilutions	<p>Dilute the sample so that the expected range of concentrations fall within the detection range of this kit.</p> <p>If the expected range of concentration is unknown, a pilot test should be conducted to decide the optimal dilution ratio for your samples.</p> <p>Some PubMed article(s) citing the expression level of this target are as follows:</p> <p>Boster Bio's internal QC testing used:</p> <p>Immunohistochemistry (Formalin-fixed) (1-2ug/ml for 30 minutes at RT) (Staining of formalin-fixed tissues requires heating tissue sections in 10mM Tris with 1mM EDTA, pH 9.0, for 45 min at 95&degC followed by cooling at RT for 20 minutes)</p> <p>Optimal dilution for a specific application should be determined.</p>

Anti-CD162 (Selectin P Ligand) SELPLG Monoclonal Antibody (M03674) Images



Formalin-fixed, paraffin-embedded human Spleen stained with Anti-CD162 Monoclonal Antibody (PSGL1/1601).



Formalin-fixed, paraffin-embedded human Tonsil stained with Anti-CD162 Monoclonal Antibody (PSGL1/1601).

Submit a product review to Biocompare.com

Submit a review of this product to Biocompare.com to receive a \$20 Amazon.com giftcard! Your reviews help your fellow scientists make the right decisions. Thank you for your contribution.



Anti-CD162 (Selectin P Ligand) SELPLG Monoclonal Antibody