

Anti-MAML2 (Mastermind Like Transcriptional Coactivator 2) Monoclonal Antibody

Catalog Number: M03679

About MAML2

MAML2 (mastermind-like protein 2), also known as MAM2, MAM3 or MLLMAML2, is a nuclear speckle protein that acts as a transcriptional co-activator for Notch receptors. The Notch signaling pathway influences cell fate by regulating the ability of precursor cells to properly respond to developmental signals. MAML2 is a member of the mastermind-like family of proteins that are human homologs of the *Drosophila melanogaster* mastermind protein. Through its N-terminal region, MAML2 interacts with the ankyrin repeats of the Notch proteins Notch 1, Notch 2, Notch 3 and Notch 4. This interaction leads to formation of a DNA-binding complex with the Notch proteins and RBP-J a complex that can then induce HES1 gene expression. While the N-terminal domain of MAML2 is essential for proper Notch binding, the C-terminal domain of MAML2 is essential for transcriptional activation. A chromosomal aberration involving the gene encoding MAML2 is implicated in mucoepidermoid carcinomas, clear cell hidradenomas and benign Warthin tumors.

Overview

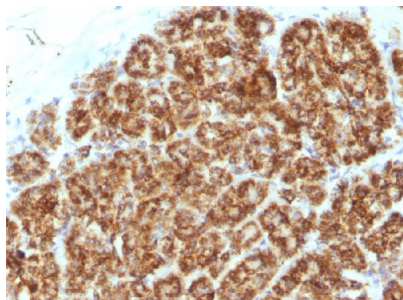
Product Name	Anti-MAML2 (Mastermind Like Transcriptional Coactivator 2) Monoclonal Antibody
Reactive Species	Human
Description	Boster Bio Anti-MAML2 (Mastermind Like Transcriptional Coactivator 2) Monoclonal Antibody (Catalog # M03679). Tested in Flow Cytometry, IF, WB, IHC applications. This antibody reacts with Human.
Conjugate	Biotin
Application	Flow Cytometry, IF, IHC, WB
Clonality	Monoclonal Clone: MAML2/1302
Formulation	Prepared in 10mM PBS with 0.05% BSA & 0.05% azide. Also available WITHOUT BSA & azide at 1.0mg/ml.
Storage Instructions	Antibody with azide - store at 2 to 8°C. Antibody without azide - store at -20 to -80°C. Antibody is stable for 24 months. Non-hazardous. No MSDS required.
Host	Mouse
Uniprot ID	Q8IZL2

Technical Details

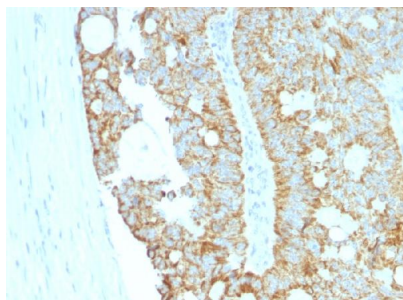
Immunogen	Recombinant human MAML2 fragment
Predicted Reactive Species	Pig, Rabbit
Cross Reactivity	Does not cross-react with primate, avian or amphibian GR.

Isotype	IgG2a, kappa
Form	Liquid
Concentration	Purified antibody with BSA and azide at 200ug/ml
Purification	200ug/ml of antibody purified from Bioreactor Concentrate by Protein A/G.
Suggested Dilutions	<p>Dilute the sample so that the expected range of concentrations fall within the detection range of this kit.</p> <p>If the expected range of concentration is unknown, a pilot test should be conducted to decide the optimal dilution ratio for your samples.</p> <p>Some PubMed article(s) citing the expression level of this target are as follows:</p> <p>Boster Bio's internal QC testing used:</p> <p>Flow Cytometry (1-2ug/million cells)</p> <p>Immunofluorescence (1-2ug/ml)</p> <p>Western Blot (1-2ug/ml)</p> <p>Immunohistochemistry (Formalin-fixed) (1-2ug/ml for 30 minutes at RT)(Staining of formalin-fixed tissues is enhanced by heating tissue sections in 10mM Tris with 1mM EDTA, pH 9.0 for 45 min at 95&degC followed by cooling at RT for 20 minutes)Optimal dilution for a specific application should be determined.</p>

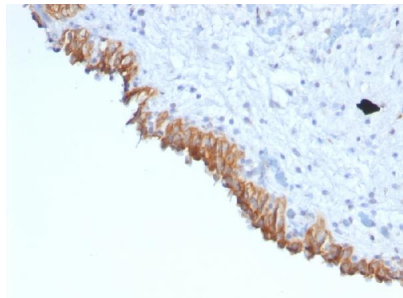
Anti-MAML2 (Mastermind Like Transcriptional Coactivator 2) Monoclonal Antibody (M03679) Images



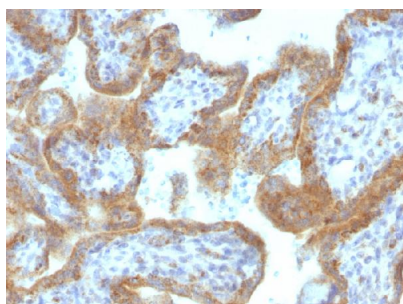
Formalin-fixed, paraffin-embedded human Pancreas stained with Anti-MAML2 Monoclonal Antibody (MAML2/1302).



Formalin-fixed, paraffin-embedded human Colon Carcinoma stained with Anti-MAML2 Monoclonal Antibody (MAML2/1302).



Formalin-fixed, paraffin-embedded human Bladder Carcinoma stained with Anti-MAML2 Monoclonal Antibody (MAML2/1302).



Formalin-fixed, paraffin-embedded human Placenta stained with Anti-MAML2 Monoclonal Antibody (MAML2/1302).

Submit a product review to Biocompare.com

Submit a review of this product to Biocompare.com to receive a \$20 Amazon.com giftcard! Your reviews help your fellow scientists make the right decisions. Thank you for your contribution.



Anti-MAML2 (Mastermind Like Transcriptional Coactivator 2) Monoclonal Antibody