

## Anti-Alpha Cardiac Actin (ACTC1) Rabbit Monoclonal Antibody, Clone#RM257

Catalog Number: M03744

### Overview

Product Name	Anti-Alpha Cardiac Actin (ACTC1) Rabbit Monoclonal Antibody, Clone#RM257
Reactive Species	Human, Mouse
Description	Boster Bio Anti-Alpha Cardiac Actin (ACTC1) Rabbit Monoclonal Antibody, Clone#RM257 (Catalog # M03744). Tested in IHC, WB applications. This antibody reacts with Human, Mouse.
Application	IHC, WB
Clonality	Monoclonal RM257
Formulation	50% Glycerol/PBS with 1% BSA and 0.09% sodium azide
Storage Instructions	Store at -20°C for one year. Avoid repeated freeze-thaw cycles.
Host	Rabbit
Uniprot ID	P68032

### Technical Details

Immunogen	A synthetic peptide corresponding to the N-terminus of human alpha-cardiac actin
Predicted Reactive Species	Bovine, Rat
Cross Reactivity	The antibody reacts to human and mouse alpha cardiac actin (Actin, alpha cardiac muscle 1). This antibody may also react to bovine or rat alpha-cardiac actin, as predicted by immunogen homology
Isotype	Rabbit IgG
Form	Liquid
Concentration	0.5-1mg/ml, actual concentration vary by lot. Use suggested dilution ratio to decide dilution procedure.
Purification	Protein A affinity purified from an animal origin-free culture supernatant
Suggested Dilutions	Dilute the sample so that the expected range of concentrations fall within the detection range of this kit. If the expected range of concentration is unknown, a pilot test should be conducted to decide the optimal dilution ratio for your samples. Some PubMed article(s) citing the expression level of this target are as follows: Boster Bio's internal QC testing used: Immunohistochemistry (IHC): 1:1000-1:2000 dilution WB: 1:1000-1:2000 dilution.



## Anti-Alpha Cardiac Actin (ACTC1) Rabbit Monoclonal Antibody, Clone#RM257 (M03744) Images

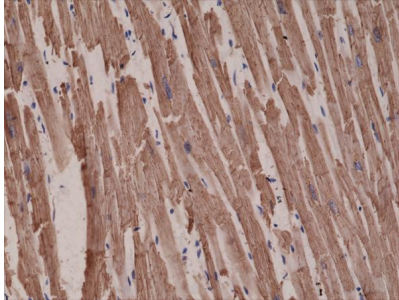


Figure 1. Western Blotting result  
Western Blot of mouse heart tissue lysate, using Anti-alpha cardiac actin RM257 at a 1:1000 dilution.

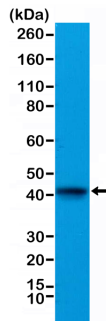


Figure 2. Western Blotting result  
Western Blot of mouse heart tissue lysate, using Anti-alpha cardiac actin RM257 at a 1:1000 dilution.

## 7 Publications Citing This Product

1. PubMed ID: 10.1002/sml.202103239, Photothermal and Enhanced Photocatalytic Therapies Conduce to Synergistic Anticancer Phototherapy with Biodegradable Titanium Diselenide Nanosheets
2. PubMed ID: -, Heshen Tian, Lei Liu, Ying Wu et al. Resistin-like Molecule beta Acts as a Mitogenic Factor in Hypoxic Pulmonary Hypertension via the Ca<sup>2+</sup>-dependent PI3K/Akt/mTOR and PKC/MAPK Signaling Pathways, 04 December 2020, PREPRINT (Version 3) available at Research Square
3. PubMed ID: -, Promotion of USP4 to TGF-beta1-induced EMT in renal tubular epithelial cells is regulated by Akt through stabilizing TbetaRI. Jin-Yun Pu, Li-Xia Wang, Jie Wang, Yu Zhang, Jian-Hua Zhou bioRxiv 2020.10.28.358796; doi:https://doi.org/10.1101/2020.10.28.358796

Visit [bosterbio.com/anti-alpha-cardiac-actin-actc1-rabbit-monoclonal-antibody-clone-rm257-m03744-boster.html](https://www.bosterbio.com/anti-alpha-cardiac-actin-actc1-rabbit-monoclonal-antibody-clone-rm257-m03744-boster.html) to see all 7 publications.

## Submit a product review to Biocompare.com

Submit a review of this product to Biocompare.com to receive a \$20 Amazon.com giftcard! Your reviews help your fellow scientists make the right decisions. Thank you for your contribution.



Anti-Alpha Cardiac Actin (ACTC1) Rabbit Monoclonal Antibody, Clone#RM257