

Anti-BCL2A1/Bcl 2 Related Protein A1 Rabbit Monoclonal Antibody

Catalog Number: M03850

About BCL2A1

Plays a major role in tight junction-specific obliteration of the intercellular space.

Overview

Product Name	Anti-BCL2A1/Bcl 2 Related Protein A1 Rabbit Monoclonal Antibody
Reactive Species	Human, Mouse, Rat
Description	Boster Bio Anti-BCL2A1/Bcl 2 Related Protein A1 Rabbit Monoclonal Antibody catalog # M03850. Tested in WB, IHC, Flow Cytometry applications. This antibody reacts with Human, Mouse, Rat.
Application	Flow Cytometry, IHC, WB
Clonality	Monoclonal EEE-2
Formulation	Rabbit IgG in phosphate buffered saline, pH 7.4, 150mM NaCl, 0.02% sodium azide and 50% glycerol, 0.4-0.5mg/ml BSA.
Storage Instructions	Store at -20°C for one year. For short term storage and frequent use, store at 4°C for up to one month. Avoid repeated freeze-thaw cycles.
Host	Rabbit
Uniprot ID	Q16548

Technical Details

Immunogen	A synthesized peptide derived from human BCL2A1
Isotype	Rabbit IgG
Form	Liquid
Concentration	Actual concentration vary by lot. Use suggested dilution ratio to decide dilution procedure.
Purification	Affinity-chromatography
Suggested Dilutions	<p>Dilute the sample so that the expected range of concentrations fall within the detection range of this kit.</p> <p>If the expected range of concentration is unknown, a pilot test should be conducted to decide the optimal dilution ratio for your samples.</p> <p>Some PubMed article(s) citing the expression level of this target are as follows:</p> <p>Boster Bio's internal QC testing used:</p> <p>WB 1:500-1:2000 IHC 1:50-1:200 FC 1:100</p>

Anti-BCL2A1/Bcl 2 Related Protein A1 Rabbit Monoclonal Antibody (M03850) Images

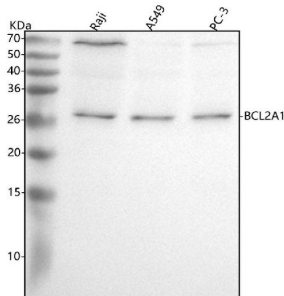


Figure 1. Western blot analysis of BCL2A1 using anti-BCL2A1 antibody (M03850).

Electrophoresis was performed on a 5-20% SDS-PAGE gel at 70V (Stacking gel) / 90V (Resolving gel) for 2-3 hours. The sample well of each lane was loaded with 30 ug of sample under reducing conditions.

Lane 1: human Raji whole cell lysates,

Lane 2: human A549 whole cell lysates,

Lane 3: human PC-3 whole cell lysates.

After electrophoresis, proteins were transferred to a nitrocellulose membrane at 150 mA for 50-90 minutes.

Blocked the membrane with 5% non-fat milk/TBS for 1.5

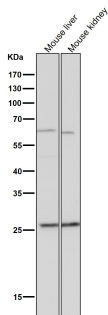
hour at RT. The membrane was incubated with rabbit anti-BCL2A1 antigen affinity purified monoclonal antibody (Catalog # M03850) at 1:500 overnight at 4°C, then washed

with TBS-0.1%Tween 3 times with 5 minutes each and

probed with a goat anti-rabbit IgG-HRP secondary antibody at a dilution of 1:500 for 1.5 hour at RT. The signal is

developed using an Enhanced Chemiluminescent detection (ECL) kit (Catalog # EK1002) with Tanon 5200 system. A

specific band was detected for BCL2A1 at approximately 27 kDa. The expected band size for BCL2A1 is at 20 kDa.



All lanes use the Antibody at 1:1K dilution for 1 hour at room temperature.

Submit a product review to Biocompare.com

Submit a review of this product to Biocompare.com to receive a \$20 Amazon.com giftcard! Your reviews help your fellow scientists make the right decisions. Thank you for your contribution.



Anti-BCL2A1/Bcl 2 Related Protein A1 Rabbit Monoclonal Antibody