

Anti-Myoglobin MB Rabbit Monoclonal Antibody

Catalog Number: M04058

About MB

Plays a major role in tight junction-specific obliteration of the intercellular space.

Overview

Product Name	Anti-Myoglobin MB Rabbit Monoclonal Antibody
Reactive Species	Human, Mouse, Rat
Description	Boster Bio Anti-Myoglobin MB Rabbit Monoclonal Antibody catalog # M04058. Tested in WB, IHC, ICC/IF, IP applications. This antibody reacts with Human, Mouse, Rat.
Application	IP, IF, IHC, ICC, WB
Clonality	Monoclonal FOD-13
Formulation	Rabbit IgG in phosphate buffered saline, pH 7.4, 150mM NaCl, 0.02% sodium azide and 50% glycerol, 0.4-0.5mg/ml BSA.
Storage Instructions	Store at -20°C for one year. For short term storage and frequent use, store at 4°C for up to one month. Avoid repeated freeze-thaw cycles.
Host	Rabbit
Uniprot ID	P02144

Technical Details

Immunogen	A synthesized peptide derived from human Myoglobin
Isotype	Rabbit IgG
Form	Liquid
Concentration	Actual concentration vary by lot. Use suggested dilution ratio to decide dilution procedure.
Purification	Affinity-chromatography
Suggested Dilutions	<p>Dilute the sample so that the expected range of concentrations fall within the detection range of this kit.</p> <p>If the expected range of concentration is unknown, a pilot test should be conducted to decide the optimal dilution ratio for your samples.</p> <p>Some PubMed article(s) citing the expression level of this target are as follows:</p> <p>Boster Bio's internal QC testing used:</p> <p>WB 1:500-1:2000</p> <p>IHC 1:50-1:200</p> <p>ICC/IF 1:50-1:200</p>

	IP 1:30
--	---------

Anti-Myoglobin MB Rabbit Monoclonal Antibody (M04058) Images

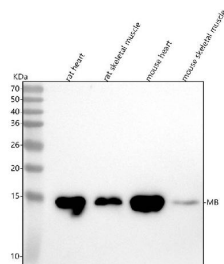


Figure 1. Western blot analysis of MB using anti-MB antibody (M04058).

Electrophoresis was performed on a 5-20% SDS-PAGE gel at 70V (Stacking gel) / 90V (Resolving gel) for 2-3 hours. The sample well of each lane was loaded with 30 ug of sample under reducing conditions.

Lane 1: rat heart tissue lysates,

Lane 2: rat skeletal muscle tissue lysates,

Lane 3: mouse heart tissue lysates,

Lane 4: mouse skeletal muscle tissue lysates.

After electrophoresis, proteins were transferred to a nitrocellulose membrane at 150 mA for 50-90 minutes.

Blocked the membrane with 5% non-fat milk/TBS for 1.5 hour at RT.

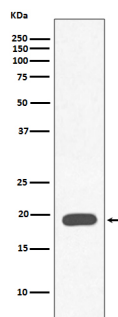
The membrane was incubated with rabbit anti-MB antigen affinity purified monoclonal antibody (Catalog # M04058) at 1:500 overnight at 4°C, then washed with TBS-0.1%Tween 3 times with 5 minutes each and probed

with a goat anti-rabbit IgG-HRP secondary antibody at a dilution of 1:5000 for 1.5 hour at RT.

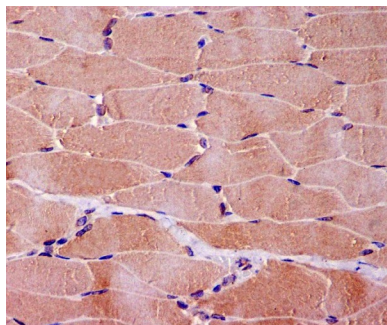
The signal is developed using an Enhanced Chemiluminescent detection (ECL) kit (Catalog # EK1002) with Tanon 5200 system.

A specific band was detected for MB at approximately 15 kDa.

The expected band size for MB is at 17 kDa.



Western blot analysis of Myoglobin expression in Human heart muscle lysate.



Immunohistochemical analysis of paraffin-embedded human skeletal muscle, using Myoglobin Antibody.

Submit a product review to Biocompare.com

Submit a review of this product to Biocompare.com to receive a \$20 Amazon.com giftcard! Your reviews help your fellow scientists make the right decisions. Thank you for your contribution.



Anti-Myoglobin MB Rabbit Monoclonal Antibody