

## Anti-CD10 MME Monoclonal Antibody

Catalog Number: M04065-1

### About MME

Plays a major role in tight junction-specific obliteration of the intercellular space.

### Overview

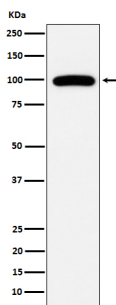
Product Name	Anti-CD10 MME Monoclonal Antibody
Reactive Species	Human, Rat
Description	Boster Bio Anti-CD10 MME Monoclonal Antibody catalog # M04065-1. Tested in WB, IHC, IP applications. This antibody reacts with Human, Rat.
Application	IP, IHC, WB
Clonality	Monoclonal AFGB-13
Formulation	Rabbit IgG in phosphate buffered saline, pH 7.4, 150mM NaCl, 0.02% sodium azide and 50% glycerol, 0.4-0.5mg/ml BSA.
Storage Instructions	Store at -20°C for one year. For short term storage and frequent use, store at 4°C for up to one month. Avoid repeated freeze-thaw cycles.
Host	Rabbit
Uniprot ID	P08473

### Technical Details

Immunogen	A synthesized peptide derived from human CD10 CD10 is a transmembrane type II molecule and functions as a metallo-peptidase requiring zinc. Specifically, CD10 cleaves 1-3 amino-terminal amino acids from peptides with a preference for neutral amino acids (valine, iso-leucine, phenylalanine, leucine or alanine) . Involved in the degradation of atrial natriuretic factor (ANF) .
Isotype	Rabbit IgG
Form	Liquid
Concentration	Actual concentration vary by lot. Use suggested dilution ratio to decide dilution procedure.
Purification	Affinity-chromatography
Suggested Dilutions	Dilute the sample so that the expected range of concentrations fall within the detection range of this kit. If the expected range of concentration is unknown, a pilot test should be conducted to decide the optimal dilution ratio for your samples. Some PubMed article(s) citing the expression level of this target are as follows: Boster Bio's internal QC testing used:

	WB 1:500-1:2000 IHC 1:50-1:200 IP 1:50
--	--

## Anti-CD10 MME Monoclonal Antibody (M04065-1) Images



Western blot analysis of CD10 expression in Ramos cell lysate.

## 1 Publications Citing This Product

1. PubMed ID: 26870216, A metanephric adenoma of the kidney associated with polycythemia: A case report

Visit [bosterbio.com/anti-cd10-antibody-m04065-1-boster.html](http://bosterbio.com/anti-cd10-antibody-m04065-1-boster.html) to see all 1 publications.

## Submit a product review to Biocompare.com

Submit a review of this product to Biocompare.com to receive a \$20 Amazon.com giftcard! Your reviews help your fellow scientists make the right decisions. Thank you for your contribution.



Anti-CD10 MME Monoclonal Antibody