

## Anti-PCYT1A Rabbit Monoclonal Antibody

Catalog Number: M04091

### About PCYT1A

Plays a major role in tight junction-specific obliteration of the intercellular space.

### Overview

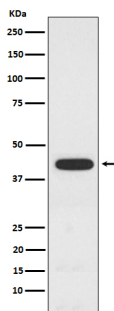
Product Name	Anti-PCYT1A Rabbit Monoclonal Antibody
Reactive Species	Human
Description	Boster Bio Anti-PCYT1A Rabbit Monoclonal Antibody catalog # M04091. Tested in WB, ICC/IF, IP, Flow Cytometry applications. This antibody reacts with Human.
Application	Flow Cytometry, IP, IF, ICC, WB
Clonality	Monoclonal 21P82
Formulation	Rabbit IgG in phosphate buffered saline, pH 7.4, 150mM NaCl, 0.02% sodium azide and 50% glycerol, 0.4-0.5mg/ml BSA.
Storage Instructions	Store at -20°C for one year. For short term storage and frequent use, store at 4°C for up to one month. Avoid repeated freeze-thaw cycles.
Host	Rabbit
Uniprot ID	P49585

### Technical Details

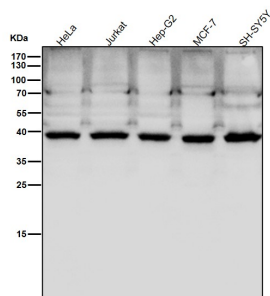
Immunogen	A synthesized peptide derived from human PCYT1A
Isotype	IgG
Form	Liquid
Concentration	Actual concentration vary by lot. Use suggested dilution ratio to decide dilution procedure.
Purification	Affinity-chromatography
Suggested Dilutions	<p>Dilute the sample so that the expected range of concentrations fall within the detection range of this kit.</p> <p>If the expected range of concentration is unknown, a pilot test should be conducted to decide the optimal dilution ratio for your samples.</p> <p>Some PubMed article(s) citing the expression level of this target are as follows:</p> <p>Boster Bio's internal QC testing used:</p> <p>WB 1:500-1:2000 ICC/IF 1:50-1:200 IP 1:50</p>

	FC 1:50
--	---------

## Anti-PCYT1A Rabbit Monoclonal Antibody (M04091) Images



Western blot analysis of PCYT1A expression in A549 cell lysate.



All lanes use the Antibody at 1:5K dilution for 1 hour at room temperature.

### Submit a product review to Biocompare.com

Submit a review of this product to Biocompare.com to receive a \$20 Amazon.com giftcard! Your reviews help your fellow scientists make the right decisions. Thank you for your contribution.



Anti-PCYT1A Rabbit Monoclonal Antibody