

## Anti-Villin (GI-Mucosal & Urogenital Brush Border Marker) VIL1 Monoclonal Antibody

Catalog Number: M04205

### About VIL1

Recognizes a protein of 95kDa, which is identified as villin. It is a major constituent in the microvilli, which compose the brush border of epithelial cells forming absorptive surfaces of the intestinal and renal proximal tubular epithelia. Anti-Villin labels the brush border area in the gastrointestinal mucosal epithelium and urogenital tract. Among neoplasms, villin is predominantly expressed in tumors of colorectal origin. Antibody to villin is useful in identifying malignant cells from primary and metastatic colorectal carcinomas. This antibody also labels Merkel cells of the skin.

### Overview

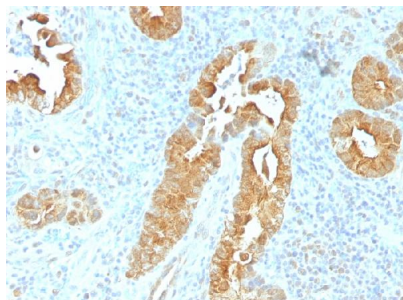
Product Name	Anti-Villin (GI-Mucosal & Urogenital Brush Border Marker) VIL1 Monoclonal Antibody
Reactive Species	Human
Description	Boster Bio <a href="#">Anti-Villin</a> (GI-Mucosal & Urogenital Brush Border Marker) VIL1 Monoclonal Antibody (Catalog # M04205). Tested in WB, IHC applications. This antibody reacts with Human.
Conjugate	Biotin
Application	IHC, WB
Clonality	Monoclonal Clone: VIL1/1325
Formulation	Prepared in 10mM PBS with 0.05% BSA & 0.05% azide. Also available WITHOUT BSA & azide at 1.0mg/ml.
Storage Instructions	Antibody with azide - store at 2 to 8°C. Antibody without azide - store at -20 to -80°C. Antibody is stable for 24 months. Non-hazardous. No MSDS required.
Host	Mouse
Uniprot ID	P09327

### Technical Details

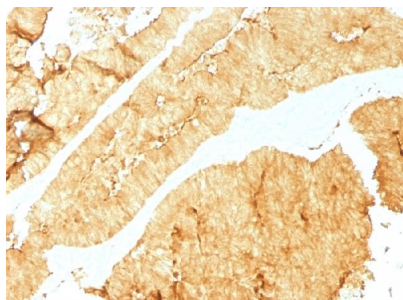
Immunogen	Recombinant human Villin fragment (around aa179-311) (exact sequence is proprietary))
Predicted Reactive Species	Pig, Rabbit
Cross Reactivity	Does not cross-react with primate, avian or amphibian GR.
Isotype	IgG1, kappa
Form	Liquid

Concentration	Purified antibody with BSA and azide at 200ug/ml
Purification	200ug/ml of antibody purified from Bioreactor Concentrate by Protein A/G.
Suggested Dilutions	<p>Dilute the sample so that the expected range of concentrations fall within the detection range of this kit.</p> <p>If the expected range of concentration is unknown, a pilot test should be conducted to decide the optimal dilution ratio for your samples.</p> <p>Some PubMed article(s) citing the expression level of this target are as follows:</p> <p>Boster Bio's internal QC testing used:</p> <p>Western Blot (1-2ug/ml for 60 minutes at RT)</p> <p>Immunohistochemistry (Formalin-fixed) (0.25-0.5ug/ml for 30 minutes at RT)(Staining of formalin-fixed tissues requires heating tissue sections in 10mM Tris with 1mM EDTA, pH 9.0, for 45 min at 95&amp;degC followed by cooling at RT for 20 minutes)</p> <p>Optimal dilution for a specific application should be determined.</p>

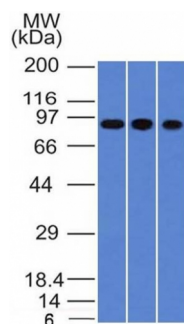
## Anti-Villin (GI-Mucosal & Urogenital Brush Border Marker) VIL1 Monoclonal Antibody (M04205) Images



Formalin-fixed, paraffin-embedded human Rectum stained with Anti-Villin Mouse Monoclonal Antibody (VIL1/1325).



Formalin-fixed, paraffin-embedded human Colon stained with Anti-Villin Mouse Monoclonal Antibody (VIL1/1325).



Western Blot of A549, HepG2 & HCT116 cell lysates using Anti-Villin Mouse Monoclonal Antibody (VIL1/1325).

**Submit a product review to Biocompare.com**

Submit a review of this product to Biocompare.com to receive a \$20 Amazon.com giftcard! Your reviews help your fellow scientists make the right decisions. Thank you for your contribution.



Anti-Villin (GI-Mucosal & Urogenital Brush Border Marker) VIL1 Monoclonal Antibody