

Anti-Peptide YY (human) Monoclonal Antibody (1)

Catalog Number: M04223

About PYY

Heat shock protein 47, also known as SERPINH1 or HSP47, is a serpin which serves as a human chaperone protein for collagen. This protein is a member of the serpin superfamily of serine proteinase inhibitors. Its expression is induced by heat shock. The protein localizes to the endoplasmic reticulum lumen and binds collagen; thus it is thought to be a molecular chaperone involved in the maturation of collagen molecules. Autoantibodies to this protein have been found in patients with rheumatoid arthritis. It has been found that HSP47 monitors the integrity of the triple helix of type I procollagen at the ER/cis-Golgi boundary and, when absent, the rate of transit from the ER to the Golgi is increased and the helical structure is compromised.

Overview

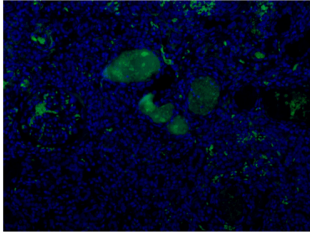
Product Name	Anti-Peptide YY (human) Monoclonal Antibody (1)
Reactive Species	Human
Description	Mouse Monoclonal 1 antibody for PYY detection. Tested positive for ELISA, IHC in Human
Application	ELISA, IHC
Clonality	Monoclonal 1
Formulation	Liquid. In 0.01M phosphate buffer, pH 7.4, containing 0.5M sodium chloride and 15mM sodium azide.
Storage Instructions	Store at -20°C for one year. For short term storage and frequent use, store at 4°C for up to one month. Avoid repeated freeze-thaw cycles.
Host	Mouse
Uniprot ID	P10082

Technical Details

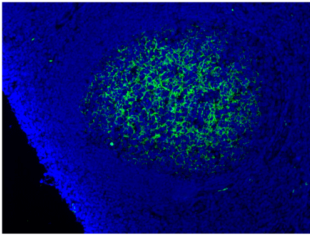
Immunogen	Synthetic human Peptide YY.
Predicted Reactive Species	Bovine, Goat, Guinea Pig, Hamster, Monkey, Sheep
Cross Reactivity	Detects ~20kDa. Does not cross-react with alphaB-crystallin, betaL-crystallin, ̢H- crystallin, gamma-crystallin, HSP25, HSP27 or HSP47 proteins.
Isotype	IgG1
Form	Liquid. In 0.01M phosphate buffer, pH 7.4, containing 0.5M sodium chloride and 15mM sodium azide.
Concentration	0.5-1mg/ml, actual concentration vary by lot. Use suggested dilution ratio to decide dilution

	procedure.
Purification	Protein A/G-affinity purified.
Suggested Dilutions	<p>Dilute the sample so that the expected range of concentrations fall within the detection range of this kit.</p> <p>If the expected range of concentration is unknown, a pilot test should be conducted to decide the optimal dilution ratio for your samples.</p> <p>Some PubMed article(s) citing the expression level of this target are as follows:</p> <p>Boster Bio's internal QC testing used:</p> <p>Optimal conditions must be determined individually for each application.</p>

Anti-Peptide YY (human) Monoclonal Antibody (1) (M04223) Images



IF staining of human kidney with BPD-ABS-004-22. Plasma of veins are strongly stained. Dilution: 1:75.



IF staining of tonsil tissue with BPD-ABS-004-22. Follicular dendritic cell network stained strongly in germinal centers of tonsil tissue. Dilution: 1:75.

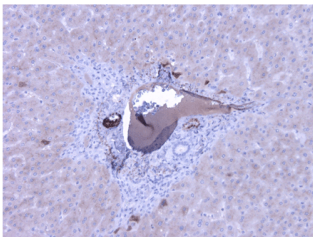


Figure 3. IHC analysis of PYY using anti-PYY antibody (M04223).

PYY was detected in paraffin-embedded section. Heat mediated antigen retrieval was performed in citrate buffer (pH6, epitope retrieval solution) for 20 mins. The tissue section was blocked with 10% goat serum. The tissue section was then incubated with 1ug/ml rabbit anti-PYY Antibody (M04223) overnight at 4°C. Biotinylated goat anti Mouse IgG antibody was used as secondary antibody and incubated for 30 minutes at 37°C. The tissue section was developed using Streptavidin-Biotin-Complex (SABC)(Catalog # SA1021) with DAB as the chromogen.

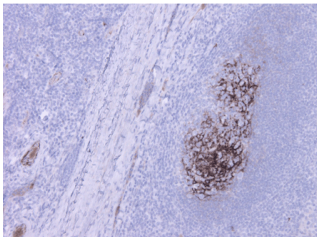


Figure 4. IHC analysis of PYY using anti-PYY antibody (M04223).

PYY was detected in paraffin-embedded section. Heat mediated antigen retrieval was performed in citrate buffer (pH6, epitope retrieval solution) for 20 mins. The tissue section was blocked with 10% goat serum. The tissue section was then incubated with 1ug/ml rabbit anti-PYY Antibody (M04223) overnight at 4°C. Biotinylated goat anti Mouse IgG antibody was used as secondary antibody and incubated for 30 minutes at 37°C. The tissue section was developed using Streptavidin-Biotin-Complex (SABC)(Catalog # SA1021) with DAB as the chromogen.

Submit a review of this product to Biocompare.com to receive a \$20 Amazon.com giftcard! Your reviews help your fellow scientists make the right decisions. Thank you for your contribution.



Anti-Peptide YY (human) Monoclonal Antibody (1)