

## Anti-Calretinin Antibody

Catalog Number: M04255-3

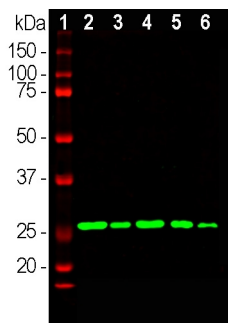
### Overview

Product Name	Anti-Calretinin Antibody
Reactive Species	Human, Mouse, Rat
Description	Boster Bio Anti-Calretinin Antibody catalog # M04255-3. Tested in IF, IHC, WB applications. This antibody reacts with Human, Mouse, Rat.
Application	IF, IHC, WB
Clonality	Polyclonal
Formulation	Supplied as an aliquot of serum plus 5mM NaN <sub>3</sub>
Storage Instructions	Store at -20°C for one year. For short term storage and frequent use, store at 4°C for up to one month. Avoid repeated freeze-thaw cycles.
Host	Rabbit
Uniprot ID	P22676

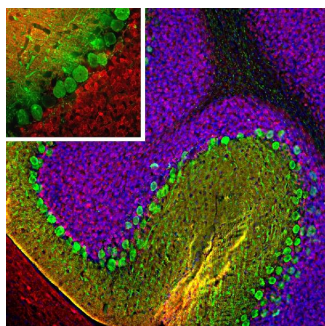
### Technical Details

Immunogen	Full-length recombinant human calretinin protein
Concentration	0.5-1mg/ml, actual concentration vary by lot. Use suggested dilution ratio to decide dilution procedure.
Suggested Dilutions	<p>Dilute the sample so that the expected range of concentrations fall within the detection range of this kit.</p> <p>If the expected range of concentration is unknown, a pilot test should be conducted to decide the optimal dilution ratio for your samples.</p> <p>Some PubMed article(s) citing the expression level of this target are as follows:</p> <p>Boster Bio's internal QC testing used:</p> <p>WB: 1:5,000-10,000 IF/ICC or IHC: 1:5,000-1:10,000</p>

## Anti-Calretinin Antibody (M04255-3) Images



Western blot analysis of different tissue lysates probed with rabbit pAb to calretinin, M04255-3, dilution 1:10,000 in green: [1] protein standard (red), [2] rat brain, [3] rat spinal cord, [4] mouse brain, [5] mouse spinal cord, and [6] cow spinal cord. A band at 29kDa corresponds to the calretinin protein.



Immunofluorescent analysis of rat cerebellum section stained with rabbit pAb to calretinin, M04255-3, dilution 1:5,000 in red, and costained with mouse mAb to calbindin, 1:1,000 in green. Following transcardial perfusion of rat with 4% paraformaldehyde, brain was post fixed for 24 hours, cut to 45M, and free-floating sections were stained with the above antibodies. The calretinin antibody stains interneurons predominantly in the molecular layer, while the calbindin antibody strongly labels the dendrites and perikarya of Purkinje cells in the molecular layer of the cerebellum.

## Submit a product review to Biocompare.com

Submit a review of this product to Biocompare.com to receive a \$20 Amazon.com giftcard! Your reviews help your fellow scientists make the right decisions. Thank you for your contribution.



Anti-Calretinin Antibody