

## Anti-Calretinin (CALB2) Rabbit Monoclonal Antibody, Clone#RM324

Catalog Number: M04255-5

### Overview

Product Name	Anti-Calretinin (CALB2) Rabbit Monoclonal Antibody, Clone#RM324
Reactive Species	Human
Description	Boster Bio Anti-Calretinin (CALB2) Rabbit Monoclonal Antibody, Clone#RM324 (Catalog # M04255-5). Tested in IHC, WB applications. This antibody reacts with Human.
Application	IHC, WB
Clonality	Monoclonal RM324
Formulation	50% Glycerol/PBS with 1% BSA and 0.09% sodium azide
Storage Instructions	Store at -20°C for one year. Avoid repeated freeze-thaw cycles.
Host	Rabbit
Uniprot ID	P22676

### Technical Details

Immunogen	A peptide corresponding to N-terminus of human Calretinin
Predicted Reactive Species	Mouse, Rat
Cross Reactivity	This antibody reacts to human Calretinin. It may also react to mouse or rat Calretinin, as predicted by immunogen homology.
Isotype	Rabbit IgG
Form	Liquid
Concentration	0.5-1mg/ml, actual concentration vary by lot. Use suggested dilution ratio to decide dilution procedure.
Purification	Protein A affinity purified from an animal origin-free culture supernatant
Suggested Dilutions	<p>Dilute the sample so that the expected range of concentrations fall within the detection range of this kit.</p> <p>If the expected range of concentration is unknown, a pilot test should be conducted to decide the optimal dilution ratio for your samples.</p> <p>Some PubMed article(s) citing the expression level of this target are as follows:</p> <p>Boster Bio's internal QC testing used:</p> <p>Immunohistochemistry (IHC): 1:500-1:1000 dilution</p> <p>WB: 1:2000-1:4000 dilution.</p>



## Anti-Calretinin (CALB2) Rabbit Monoclonal Antibody, Clone#RM324 (M04255-5) Images

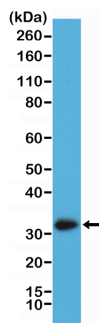


Figure 1. Western Blotting result  
Western Blot of A431 cell lysate using anti-Calretinin rabbit monoclonal antibody (Clone RM324) at a 1:2000 dilution.

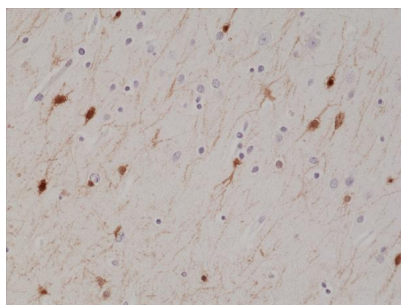


Figure 2. IHC result  
Immunohistochemical staining of formalin fixed and paraffin embedded human brain tissue section using anti-Calretinin rabbit monoclonal antibody (Clone RM324) at a 1:1000 dilution.

### Submit a product review to Biocompare.com

Submit a review of this product to Biocompare.com to receive a \$20 Amazon.com giftcard! Your reviews help your fellow scientists make the right decisions. Thank you for your contribution.



Anti-Calretinin (CALB2) Rabbit Monoclonal Antibody, Clone#RM324