

Anti-CD11a / Integrin alphaL / LFA-1 alpha Chain Monoclonal Antibody

Catalog Number: M04466

About ITGAL

Recognizes a protein of 180kDa, identified as CD11a (Leucocyte Workshop II; Code N202). CD11a complex with the 2 subunit of the integrin family, CD18, to form the cell surface heterodimer, LFA-1 or CD11a /C18 (aLbL). LFA-1 is expressed on all leukocytes including lymphocytes, monocytes, and granulocytes. It is involved in leukocyte adhesion to its ligands including intercellular adhesion molecule-1 (ICAM-1 or CD54), ICAM-2 (CD102), ICAM-3 (CD50) and Telencephalin (TLN) and play a role in most immune/inflammatory responses.

Overview

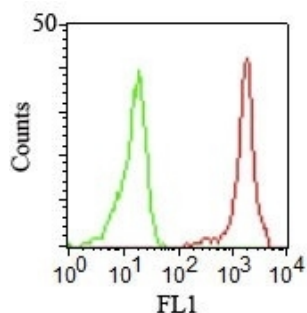
Product Name	Anti-CD11a / Integrin alphaL / LFA-1 alpha Chain Monoclonal Antibody
Reactive Species	Human
Description	Boster Bio Anti-CD11a / Integrin alphaL / LFA-1 alpha Chain Monoclonal Antibody (Catalog # M04466). Tested in Flow Cytometry, IF, Functional Assay applications. This antibody reacts with Human.
Conjugate	Biotin
Application	Flow Cytometry, IF, Functional Assay
Clonality	Monoclonal Clone: CRIS-3
Formulation	Prepared in 10mM PBS with 0.05% BSA & 0.05% azide. Also available WITHOUT BSA & azide at 1.0mg/ml.
Storage Instructions	Antibody with azide - store at 2 to 8°C. Antibody without azide - store at -20 to -80°C. Antibody is stable for 24 months. Non-hazardous. No MSDS required.
Host	Mouse
Uniprot ID	P20701

Technical Details

Immunogen	Stimulated human leukocytes
Predicted Reactive Species	Pig, Rabbit
Cross Reactivity	Does not cross-react with primate, avian or amphibian GR.
Isotype	IgG2b, kappa
Form	Liquid
Concentration	Purified antibody with BSA and azide at 200ug/ml

Purification	200ug/ml of antibody purified from Bioreactor Concentrate by Protein A/G.
Suggested Dilutions	<p>Dilute the sample so that the expected range of concentrations fall within the detection range of this kit.</p> <p>If the expected range of concentration is unknown, a pilot test should be conducted to decide the optimal dilution ratio for your samples.</p> <p>Some PubMed article(s) citing the expression level of this target are as follows:</p> <p>Boster Bio's internal QC testing used:</p> <p>Flow Cytometry (1-2ug/million cells)</p> <p>Immunofluorescence (1-2ug/ml) Functional Studies (Order Ab without BSA & Azide)</p> <p>Optimal dilution for a specific application should be determined.</p>

Anti-CD11a / Integrin alphaL / LFA-1 alpha Chain Monoclonal Antibody (M04466) Images



Flow Cytometric staining of human PBMCs using Anti-CD11a Mouse Monoclonal Antibody (CRIS-3).

Submit a product review to Biocompare.com

Submit a review of this product to Biocompare.com to receive a \$20 Amazon.com giftcard! Your reviews help your fellow scientists make the right decisions. Thank you for your contribution.



Anti-CD11a / Integrin alphaL / LFA-1 alpha Chain Monoclonal Antibody