

Anti-DCP1A Monoclonal Antibody

Catalog Number: M04587

About DCP1A

Putative transcription factor involved in pancreas development and function.

Overview

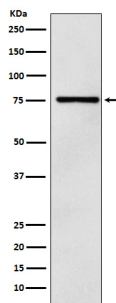
| | |
|----------------------|------------------------------------------------------------------------------------------------------------------------------------------------------------------|
| Product Name | Anti-DCP1A Monoclonal Antibody |
| Reactive Species | Human, Mouse, Rat |
| Description | Boster Bio Anti-DCP1A Monoclonal Antibody catalog # M04587. Tested in WB, IHC, ICC/IF, Flow Cytometry applications. This antibody reacts with Human, Mouse, Rat. |
| Application | Flow Cytometry, IF, IHC, ICC, WB |
| Clonality | Monoclonal AEFC-4 |
| Formulation | Rabbit IgG in phosphate buffered saline, pH 7.4, 150mM NaCl, 0.02% sodium azide and 50% glycerol, 0.4-0.5mg/ml BSA. |
| Storage Instructions | Store at -20°C for one year. For short term storage and frequent use, store at 4°C for up to one month. Avoid repeated freeze-thaw cycles. |
| Host | Rabbit |
| Uniprot ID | Q9NPI6 |

Technical Details

| | |
|---------------------|------------------------------------------------------------------------------------------------------------------------------------------------------------------------------------------------------------------------------------------------------------------------------------------------------------------------------------------------------------------------------------------|
| Immunogen | A synthesized peptide derived from human DCP1A Necessary for the degradation of mRNAs, both in normal mRNA turnover and in nonsense-mediated mRNA decay. Removes the 7-methyl guanine cap structure from mRNA molecules, yielding a 5'-phosphorylated mRNA fragment and 7m-GDP. Contributes to the transactivation of target genes after stimulation by TGFB1. |
| Isotype | Rabbit IgG |
| Form | Liquid |
| Concentration | Actual concentration vary by lot. Use suggested dilution ratio to decide dilution procedure. |
| Purification | Affinity-chromatography |
| Suggested Dilutions | Dilute the sample so that the expected range of concentrations fall within the detection range of this kit. If the expected range of concentration is unknown, a pilot test should be conducted to decide the optimal dilution ratio for your samples. Some PubMed article(s) citing the expression level of this target are as follows: Boster Bio's internal QC testing used: |

| | |
|--|--------------------------------------------------------------------|
| | WB 1:500-1:2000 IHC 1:50-1:200 ICC/IF 1:50-1:200 FC 1:100 |
|--|--------------------------------------------------------------------|

Anti-DCP1A Monoclonal Antibody (M04587) Images



Western blot analysis of DCP1A expression in 293T cell lysate.

Submit a product review to Biocompare.com

Submit a review of this product to Biocompare.com to receive a \$20 Amazon.com giftcard! Your reviews help your fellow scientists make the right decisions. Thank you for your contribution.



Anti-DCP1A Monoclonal Antibody