

Anti-PUMA BBC3 Rabbit Monoclonal Antibody

Catalog Number: M04899

About BBC3

Putative transcription factor involved in pancreas development and function.

Overview

Product Name	Anti-PUMA BBC3 Rabbit Monoclonal Antibody
Reactive Species	Human, Mouse, Rat
Description	Boster Bio Anti-PUMA BBC3 Rabbit Monoclonal Antibody catalog # M04899. Tested in WB, IHC, ICC/IF, Flow Cytometry applications. This antibody reacts with Human, Mouse, Rat.
Application	Flow Cytometry, IF, IHC, ICC, WB
Clonality	Monoclonal DDO-2
Formulation	Rabbit IgG in phosphate buffered saline, pH 7.4, 150mM NaCl, 0.02% sodium azide and 50% glycerol
Storage Instructions	Store at -20°C for one year. For short term storage and frequent use, store at 4°C for up to one month. Avoid repeated freeze-thaw cycles.
Host	Rabbit
Uniprot ID	Q9BXH1

Technical Details

Immunogen	A synthesized peptide derived from human PUMA
Isotype	Rabbit IgG
Form	Liquid
Concentration	Actual concentration vary by lot. Use suggested dilution ratio to decide dilution procedure.
Purification	Affinity-chromatography
Suggested Dilutions	<p>Dilute the sample so that the expected range of concentrations fall within the detection range of this kit.</p> <p>If the expected range of concentration is unknown, a pilot test should be conducted to decide the optimal dilution ratio for your samples.</p> <p>Some PubMed article(s) citing the expression level of this target are as follows:</p> <p>Boster Bio's internal QC testing used:</p> <p>WB 1:500-1:2000 IHC 1:50-1:200 ICC/IF 1:50-1:200 FC 1:50</p>

Anti-PUMA BBC3 Rabbit Monoclonal Antibody (M04899) Images

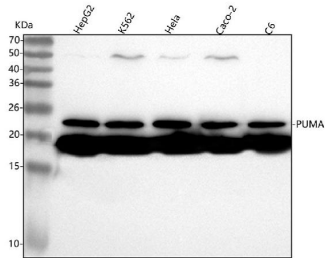


Figure 1. Western blot analysis of PUMA using anti-PUMA antibody (M04899).

Electrophoresis was performed on a 5-20% SDS-PAGE gel at 70V (Stacking gel) / 90V (Resolving gel) for 2-3 hours. The sample well of each lane was loaded with 30 ug of sample under reducing conditions.

Lane 1: human HepG2 whole cell lysates,

Lane 2: human K562 whole cell lysates,

Lane 3: human Hela whole cell lysates,

Lane 4: human CACO-2 whole cell lysates,

Lane 5: rat C6 whole cell lysates.

After electrophoresis, proteins were transferred to a nitrocellulose membrane at 150 mA for 50-90 minutes.

Blocked the membrane with 5% non-fat milk/TBS for 1.5

hour at RT. The membrane was incubated with rabbit anti-

PUMA antigen affinity purified monoclonal antibody (Catalog

M04899) at 1:500 overnight at 4°C, then washed with

TBS-0.1%Tween 3 times with 5 minutes each and probed

with a goat anti-rabbit IgG-HRP secondary antibody at a

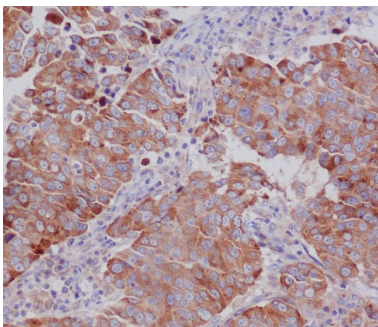
dilution of 1:500 for 1.5 hour at RT. The signal is developed

using an Enhanced Chemiluminescent detection (ECL) kit

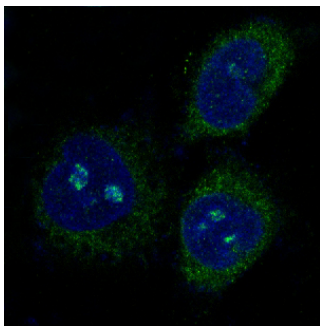
(Catalog # EK1002) with Tanon 5200 system. A specific

band was detected for PUMA at approximately 21 kDa. The

expected band size for PUMA is at 21 kDa.

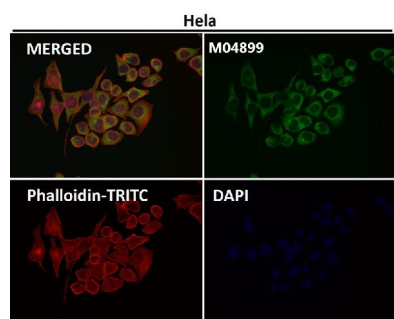
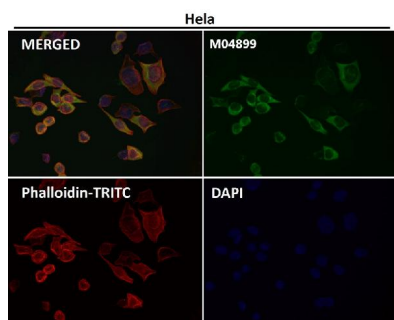


Immunohistochemical analysis of paraffin-embedded human breast cancer, using PUMA Antibody.

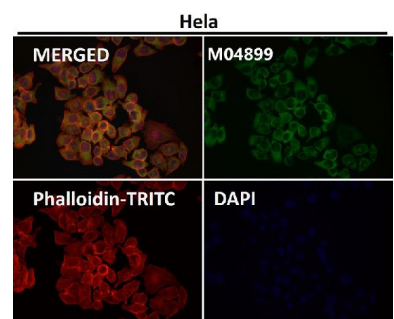


Immunofluorescent analysis of Hela cells, using PUMA Antibody.

Immunofluorescent analysis using the Antibody at 1:50 dilution.



Immunofluorescent analysis using the Antibody at 1:150 dilution



Immunofluorescent analysis using the Antibody at 1:500 dilution.

1 Publications Citing This Product

1. PubMed ID: 25630785, Nerve growth factor reduces apoptotic cell death in rat facial motor neurons after facial nerve injury

Visit bosterbio.com/anti-puma-rabbit-monoclonal-antibody-m04899-boster.html to see all 1 publications.

Submit a product review to Biocompare.com

Submit a review of this product to Biocompare.com to receive a \$20 Amazon.com giftcard! Your reviews help your fellow scientists make the right decisions. Thank you for your contribution.



Anti-PUMA BBC3 Rabbit Monoclonal Antibody