

Anti-Laminin Antibody

Catalog Number: M04965

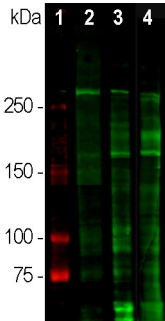
Overview

Product Name	Anti-Laminin Antibody
Reactive Species	Human, Mouse, Rat
Description	Boster Bio Anti-Laminin Antibody catalog # M04965. Tested in IHC applications. This antibody reacts with Human, Mouse, Rat.
Application	IHC
Clonality	Polyclonal
Formulation	Purified antibody at 1mg/mL in 50% PBS, 50% glycerol plus 5mM NaN ₃
Storage Instructions	Store at -20°C for one year. For short term storage and frequent use, store at 4°C for up to one month. Avoid repeated freeze-thaw cycles.
Host	Rabbit
Uniprot ID	P25391

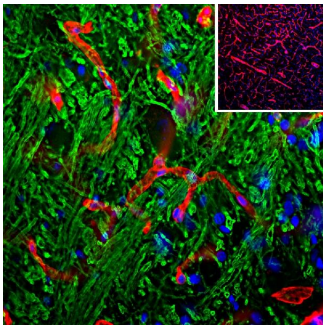
Technical Details

Immunogen	Laminin isolated from mouse EHS cells
Concentration	0.5-1mg/ml, actual concentration vary by lot. Use suggested dilution ratio to decide dilution procedure.
Suggested Dilutions	<p>Dilute the sample so that the expected range of concentrations fall within the detection range of this kit.</p> <p>If the expected range of concentration is unknown, a pilot test should be conducted to decide the optimal dilution ratio for your samples.</p> <p>Some PubMed article(s) citing the expression level of this target are as follows:</p> <p>Boster Bio's internal QC testing used:</p> <p>WB 1:1,000-5,000. IF/ICC and IHC: 1:1,000-5,000</p>

Anti-Laminin Antibody (M04965) Images



Western blot analysis of different tissue lysates using rabbit pAb to laminin, M04965, dilution 1:5,000 in green: [1] protein standard (red), [2] rat brain, [3] rat spinal cord, and [4] cow spinal cord lysate. The strong band above the 280kDa mark corresponds to full length laminin proteins. Smaller proteolytic fragments of laminin are also detected with this antibody.



Immunohistological analysis of brain stem section stained with rabbit pAb to laminin, M04965, dilution 1:1,000 in red, and costained with chicken pAb to Myelin Basic Protein (MBP), dilution 1:5,000 in green. The blue is DAPI staining of nuclear DNA. Following transcardial perfusion of rat with 4% paraformaldehyde, brain was post fixed for 24 hours, cut to 45M, and free-floating sections were stained with the above antibodies. The laminin antibody is an excellent marker of basement membranes surrounding blood vessels, while the MBP antibody stains the myelin sheaths around axons.

7 Publications Citing This Product

1. PubMed ID: 26991461, Autocrine fibronectin from differentiating mesenchymal stem cells induces the neurite elongation in vitro and promotes nerve fiber regeneration in transected spinal cord injury
2. PubMed ID: 11483085, Effects of fasudil on the cytoskeleton of trabecular meshwork cells and outflow facility in bovine eyes
3. PubMed ID: 28267813, Decellularized scaffold of cryopreserved rat kidney retains its recellularization potential

Visit bosterbio.com/anti-laminin-antibody-m04965-boster.html to see all 7 publications.

Submit a product review to Biocompare.com

Submit a review of this product to Biocompare.com to receive a \$20 Amazon.com giftcard! Your reviews help your fellow scientists make the right decisions. Thank you for your contribution.



Anti-Laminin Antibody