

## Anti-Synaptophysin SYP Rabbit Monoclonal Antibody

Catalog Number: M05049-1

### About SYP

Putative transcription factor involved in pancreas development and function.

### Overview

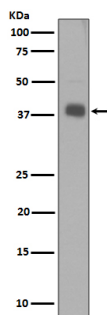
|                      |   |
|----------------------|---|
| Product Name         | Anti-Synaptophysin SYP Rabbit Monoclonal Antibody   |
| Reactive Species     | Human, Mouse, Rat   |
| Description          | Boster Bio Anti-Synaptophysin SYP Rabbit Monoclonal Antibody catalog # M05049-1. Tested in WB, IHC, ICC/IF applications. This antibody reacts with Human, Mouse, Rat. |
| Application          | IF, IHC, ICC, WB  |
| Clonality            | Monoclonal BGB-19   |
| Formulation          | Rabbit IgG in phosphate buffered saline, pH 7.4, 150mM NaCl, 0.02% sodium azide and 50% glycerol, 0.4-0.5mg/ml BSA.   |
| Storage Instructions | Store at -20°C for one year. For short term storage and frequent use, store at 4°C for up to one month. Avoid repeated freeze-thaw cycles.                            |
| Host                 | Rabbit  |
| Uniprot ID           | P08247  |

### Technical Details

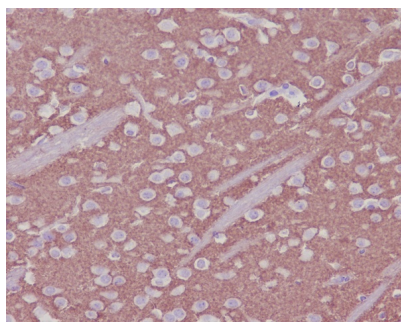
|                     |   |
|---------------------|---|
| Immunogen           | A synthesized peptide derived from human Synaptophysin  |
| Isotype             | Rabbit IgG  |
| Form                | Liquid  |
| Concentration       | Actual concentration vary by lot. Use suggested dilution ratio to decide dilution procedure.  |
| Purification        | Affinity-chromatography   |
| Suggested Dilutions | <p>Dilute the sample so that the expected range of concentrations fall within the detection range of this kit.</p> <p>If the expected range of concentration is unknown, a pilot test should be conducted to decide the optimal dilution ratio for your samples.</p> <p>Some PubMed article(s) citing the expression level of this target are as follows:</p> <p>Boster Bio's internal QC testing used:</p> <p>WB 1:5000-1:10000</p> <p>IHC 1:50-1:200</p> <p>ICC/IF 1:50-1:200</p> |



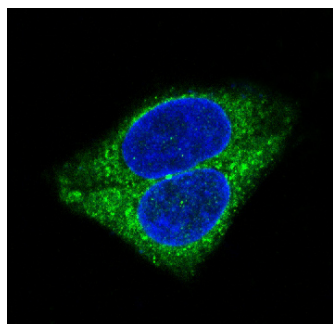
## Anti-Synaptophysin SYP Rabbit Monoclonal Antibody (M05049-1) Images



Western blot analysis of Synaptophysin expression in SH-SY5Y cell lysate.



Immunohistochemical analysis of paraffin-embedded mouse brain, using Synaptophysin Antibody .



Immunofluorescent analysis of PC-12 cells, using Synaptophysin Antibody .

## 2 Publications Citing This Product

1. PubMed ID: 33531914, Lin J, Hao C, Gong Y, Zhang Y, Li Y, Feng Z, Xu X, Huang H, Liao W. Effect of Tetramethylpyrazine on Neuroplasticity after Transient Focal Cerebral Ischemia Reperfusion in Rats. Evid Based Complement Alternat Med. 2021 Jan 18;2021:1587241.doi:10.1155/2021/1587241

2. PubMed ID: 25206583, Liu Y, Liang Z, Liu J, Zou W, Li X, Wang Y, An L. Neural Regen Res. 2013 Oct 15;8(29):2725-33. Doi: 10.3969/J.Issn.1673-5374.2013.29.004. Downregulation Of Caveolin-1 Contributes To The Synaptic Plasticity Deficit In The Hippocampus Of Aged Rats.

Visit [bosterbio.com/anti-synaptophysin-rabbit-monoclonal-antibody-m05049-1-boster.html](http://bosterbio.com/anti-synaptophysin-rabbit-monoclonal-antibody-m05049-1-boster.html) to see all 2 publications.

## Submit a product review to Biocompare.com

Submit a review of this product to Biocompare.com to receive a \$20 Amazon.com giftcard! Your



reviews help your fellow scientists make the right decisions. Thank you for your contribution.

## Anti-Synaptophysin SYP Rabbit Monoclonal Antibody