

Anti-Synaptophysin SYP Rabbit Monoclonal Antibody, Clone#RM258

Catalog Number: M05049-2

Overview

Product Name	Anti-Synaptophysin SYP Rabbit Monoclonal Antibody, Clone#RM258
Reactive Species	Human
Description	Boster Bio Anti-Synaptophysin SYP Rabbit Monoclonal Antibody, Clone#RM258 (Catalog # M05049-2). Tested in WB, IHC applications. This antibody reacts with Human.
Application	IHC, WB
Clonality	Monoclonal RM258
Formulation	50% Glycerol/PBS with 1% BSA and 0.09% sodium azide
Storage Instructions	Store at -20°C for one year. Avoid repeated freeze-thaw cycles.
Host	Rabbit
Uniprot ID	P08247

Technical Details

Immunogen	A peptide corresponding to the C-terminus of Synaptophysin
Cross Reactivity	This antibody reacts to human Synaptophysin.
Isotype	Rabbit IgG
Form	Liquid
Concentration	0.5-1mg/ml, actual concentration vary by lot. Use suggested dilution ratio to decide dilution procedure.
Purification	Protein A affinity purified from an animal origin-free culture supernatant
Suggested Dilutions	<p>Dilute the sample so that the expected range of concentrations fall within the detection range of this kit.</p> <p>If the expected range of concentration is unknown, a pilot test should be conducted to decide the optimal dilution ratio for your samples.</p> <p>Some PubMed article(s) citing the expression level of this target are as follows:</p> <p>Boster Bio's internal QC testing used:</p> <p>WB: 1:1000-1:2000 dilution</p> <p>Immunohistochemistry (IHC): 1:200- 1:500 dilution.</p>

Anti-Synaptophysin SYP Rabbit Monoclonal Antibody, Clone#RM258 (M05049-2) Images

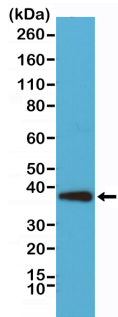


Figure 1. Western Blotting result
Western Blot analysis of HeLa whole cell lysates, using anti-Synaptophysin rabbit monoclonal antibody (Clone RM258), showed Synaptophysin (~38 kDa) expression in HeLa cells.

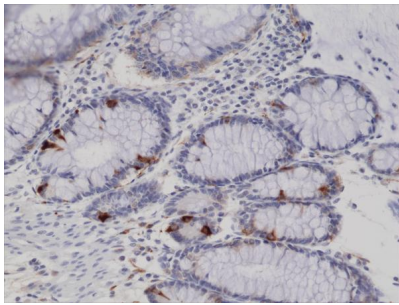


Figure 2. IHC result
Immunohistochemical staining of formalin fixed and paraffin embedded human colon tissue sections using anti-Synaptophysin rabbit monoclonal antibody (Clone RM258) at a 1:200 dilution.

1 Publications Citing This Product

1. PubMed ID: 25206583, Liu Y, Liang Z, Liu J, Zou W, Li X, Wang Y, An L. Neural Regen Res. 2013 Oct 15;8(29):2725-33. Doi: 10.3969/J.Issn.1673-5374.2013.29.004. Downregulation Of Caveolin-1 Contributes To The Synaptic Plasticity Deficit In The Hippocampus Of Aged Rats.

Visit bosterbio.com/anti-synaptophysin-rabbit-monoclonal-antibody-clone-rm258-m05049-2-boster.html to see all 1 publications.

Submit a product review to Biocompare.com

Submit a review of this product to Biocompare.com to receive a \$20 Amazon.com giftcard! Your reviews help your fellow scientists make the right decisions. Thank you for your contribution.



Anti-Synaptophysin SYP Rabbit Monoclonal Antibody, Clone#RM258