

Anti-Musashi 1 MSI1 Rabbit Monoclonal Antibody

Catalog Number: M05052

About MSI1

Putative transcription factor involved in pancreas development and function.

Overview

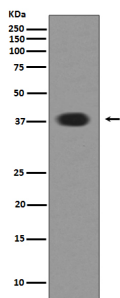
Product Name	Anti-Musashi 1 MSI1 Rabbit Monoclonal Antibody
Reactive Species	Human
Description	Boster Bio Anti-Musashi 1 MSI1 Rabbit Monoclonal Antibody catalog # M05052. Tested in WB, IHC, ICC/IF, IP, Flow Cytometry applications. This antibody reacts with Human.
Application	Flow Cytometry, IP, IF, IHC, ICC, WB
Clonality	Monoclonal BFG-13
Formulation	Rabbit IgG in phosphate buffered saline, pH 7.4, 150mM NaCl, 0.02% sodium azide and 50% glycerol, 0.4-0.5mg/ml BSA.
Storage Instructions	Store at -20°C for one year. For short term storage and frequent use, store at 4°C for up to one month. Avoid repeated freeze-thaw cycles.
Host	Rabbit
Uniprot ID	O43347

Technical Details

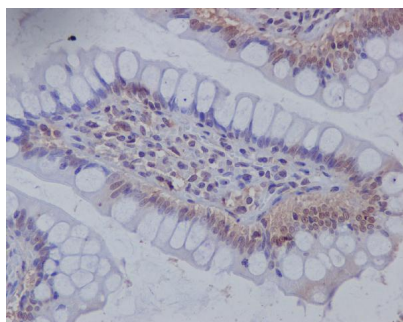
Immunogen	A synthesized peptide derived from human Musashi 1 / Msi1
Isotype	Rabbit IgG
Form	Liquid
Concentration	Actual concentration vary by lot. Use suggested dilution ratio to decide dilution procedure.
Purification	Affinity-chromatography
Suggested Dilutions	<p>Dilute the sample so that the expected range of concentrations fall within the detection range of this kit.</p> <p>If the expected range of concentration is unknown, a pilot test should be conducted to decide the optimal dilution ratio for your samples.</p> <p>Some PubMed article(s) citing the expression level of this target are as follows:</p> <p>Boster Bio's internal QC testing used:</p> <p>WB 1:1000-1:2000</p> <p>IHC 1:50-1:200</p> <p>ICC/IF 1:50-1:200</p>

	IP 1:50 FC 1:50
--	--------------------

Anti-Musashi 1 MSI1 Rabbit Monoclonal Antibody (M05052) Images



Western blot analysis of Musashi 1 expression in SH-SY-5Y cell lysate.



Immunohistochemical analysis of paraffin-embedded human colon, using Musashi 1 Antibody .

Submit a product review to Biocompare.com

Submit a review of this product to Biocompare.com to receive a \$20 Amazon.com giftcard! Your reviews help your fellow scientists make the right decisions. Thank you for your contribution.



Anti-Musashi 1 MSI1 Rabbit Monoclonal Antibody