

Anti-TCF3 TCF7L1 Rabbit Monoclonal Antibody

Catalog Number: M05152

About TCF7L1

Putative transcription factor involved in pancreas development and function.

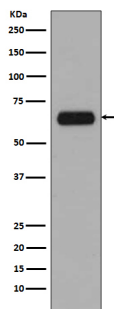
Overview

Product Name	Anti-TCF3 TCF7L1 Rabbit Monoclonal Antibody
Reactive Species	Human
Description	Boster Bio Anti-TCF3 TCF7L1 Rabbit Monoclonal Antibody catalog # M05152. Tested in WB, Flow Cytometry applications. This antibody reacts with Human.
Application	Flow Cytometry, WB
Clonality	Monoclonal CAH-20
Formulation	Rabbit IgG in phosphate buffered saline, pH 7.4, 150mM NaCl, 0.02% sodium azide and 50% glycerol, 0.4-0.5mg/ml BSA.
Storage Instructions	Store at -20°C for one year. For short term storage and frequent use, store at 4°C for up to one month. Avoid repeated freeze-thaw cycles.
Host	Rabbit
Uniprot ID	Q9HCS4

Technical Details

Immunogen	A synthesized peptide derived from human TCF3
Isotype	Rabbit IgG
Form	Liquid
Concentration	Actual concentration vary by lot. Use suggested dilution ratio to decide dilution procedure.
Purification	Affinity-chromatography
Suggested Dilutions	Dilute the sample so that the expected range of concentrations fall within the detection range of this kit. If the expected range of concentration is unknown, a pilot test should be conducted to decide the optimal dilution ratio for your samples. Some PubMed article(s) citing the expression level of this target are as follows: Boster Bio's internal QC testing used: WB 1:500-1:2000 FC 1:50

Anti-TCF3 TCF7L1 Rabbit Monoclonal Antibody (M05152) Images



Western blot analysis of TCF3 expression in A431 cell lysate.

Submit a product review to Biocompare.com

Submit a review of this product to Biocompare.com to receive a \$20 Amazon.com giftcard! Your reviews help your fellow scientists make the right decisions. Thank you for your contribution.



Anti-TCF3 TCF7L1 Rabbit Monoclonal Antibody