

## Anti-EMI1 (Early Mitotic Inhibitor-1) Monoclonal Antibody

Catalog Number: M05229

### About FBXO5

This monoclonal antibody recognizes a 56kDa protein, which is identified as Early Mitotic Inhibitor-1 (EMI1). It regulates mitosis by inhibiting the anaphase promoting complex/cyclosome (APC). Emi1 is a conserved F box protein containing a zinc-binding region essential for APC inhibition. The Emi1 protein functions to promote cyclin A accumulation and S phase entry in somatic cells by inhibiting the APC complex. At the G1-S transition, Emi1 is transcriptionally induced by the E2F transcription factor. Emi1 overexpression accelerates S-phase entry and can override a G1 block caused by overexpression of Cdh1 or the E2F-inhibitor p105 retinoblastoma protein (pRb). Depleting cells of Emi1 through RNA interference prevents accumulation of cyclin A and inhibits S phase entry.

### Overview

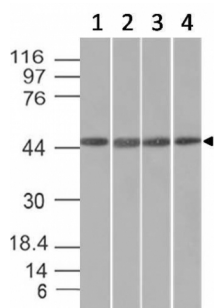
Product Name	Anti-EMI1 (Early Mitotic Inhibitor-1) Monoclonal Antibody
Reactive Species	Human
Description	Boster Bio Anti-EMI1 (Early Mitotic Inhibitor-1) Monoclonal Antibody (Catalog # M05229). Tested in WB, IHC applications. This antibody reacts with Human.
Conjugate	Biotin
Application	IHC, WB
Clonality	Monoclonal Clone: EMI1/1176
Formulation	Prepared in 10mM PBS with 0.05% BSA & 0.05% azide. Also available WITHOUT BSA & azide at 1.0mg/ml.
Storage Instructions	Antibody with azide - store at 2 to 8°C. Antibody without azide - store at -20 to -80°C. Antibody is stable for 24 months. Non-hazardous. No MSDS required.
Host	Mouse
Uniprot ID	Q9UKT4

### Technical Details

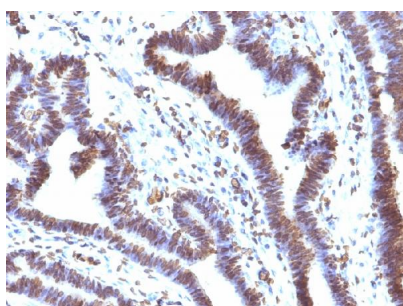
Immunogen	Recombinant fragment (203 amino acid residues between aa 1-250) of human EMI1 protein
Predicted Reactive Species	Pig, Rabbit
Cross Reactivity	Does not cross-react with primate, avian or amphibian GR.
Isotype	IgG2a, kappa
Form	Liquid

Concentration	Purified antibody with BSA and azide at 200ug/ml
Purification	200ug/ml of antibody purified from Bioreactor Concentrate by Protein A/G.
Suggested Dilutions	<p>Dilute the sample so that the expected range of concentrations fall within the detection range of this kit.</p> <p>If the expected range of concentration is unknown, a pilot test should be conducted to decide the optimal dilution ratio for your samples.</p> <p>Some PubMed article(s) citing the expression level of this target are as follows:</p> <p>Boster Bio's internal QC testing used:</p> <p>Western Blot (1-2ug/ml for 60 minutes at RT)</p> <p>Immunohistochemistry (Formalin-fixed) (1-2ug/ml for 30 minutes at RT)(Staining of formalin-fixed tissues requires heating tissue sections in 10mM Tris with 1mM EDTA, pH 9.0, for 45 min at 95&amp;degC followed by cooling at RT for 20 minutes)</p> <p>Optimal dilution for a specific application should be determined.</p>

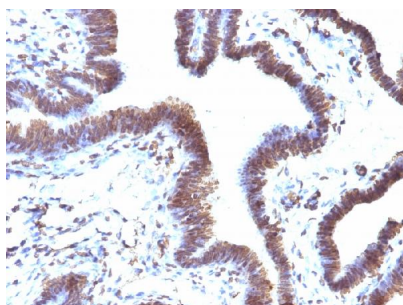
## Anti-EMI1 (Early Mitotic Inhibitor-1) Monoclonal Antibody (M05229) Images



Western Blot of HeLa, HepG2, HEK293 and K562 cell lysates with Anti-EMI1 Mouse Monoclonal Antibody (EMI1/1176).



Formalin-fixed, paraffin-embedded human Ovarian Carcinoma stained with Anti-EMI1 Mouse Monoclonal Antibody (EMI1/1176).



Formalin-fixed, paraffin-embedded human Ovarian Carcinoma stained with Anti-EMI1 Mouse Monoclonal Antibody (EMI1/1176).

### Submit a product review to Biocompare.com

Submit a review of this product to Biocompare.com to receive a \$20 Amazon.com giftcard! Your reviews help your fellow scientists make the right decisions. Thank you for your contribution.



Anti-EMI1 (Early Mitotic Inhibitor-1) Monoclonal Antibody