

## Anti-SLAMF6 / CD352 Reference Antibody (SGN-CD352A)

Catalog Number: M05310

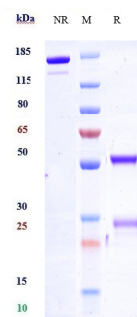
### Overview

Product Name	Anti-SLAMF6 / CD352 Reference Antibody (SGN-CD352A)
Reactive Species	Cynomolgus monkey, Human
Description	Boster Bio Anti-SLAMF6 / CD352 Reference Antibody (SGN-CD352A) (Catalog # M05310). Tested in Flow Cytometry, ELISA, FTA. This antibody reacts with Cynomolgus monkey, Human. Endotoxin: < 0.883EU/ug,determined by LAL method. Expression system: CHO Cell
Application	ELISA, Flow Cytometry, Functional Assay, Kinetics
Clonality	Monoclonal
Formulation	Purified monoclonal antibody supplied in PBS, pH6.0, without preservative.This antibody is purified through a protein A column.
Storage Instructions	Maintain refrigerated at 2-8°C for up to 2 weeks. For long-term storage, aliquot and store at -20°C to avoid repeated freeze-thaw cycles.
Uniprot ID	Q96DU3

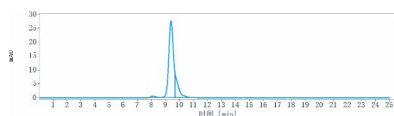
### Technical Details

Isotype	IgG1
Form	Liquid
Concentration	1mg/ml

## Anti-SLAMF6 / CD352 Reference Antibody (SGN-CD352A) (M05310) Images



Anti-SLAMF6/CD352 Reference Antibody (SGN-CD352A) on SDS-PAGE under reducing (R) condition. The gel was stained with Coomassie Blue. The purity of the protein is greater than 95%



The purity of Anti-SLAMF6/CD352 Reference Antibody (SGN-CD352A) is more than 95%

## Submit a product review to Biocompare.com

Submit a review of this product to Biocompare.com to receive a \$20 Amazon.com giftcard! Your reviews help your fellow scientists make the right decisions. Thank you for your contribution.



Anti-SLAMF6 / CD352 Reference Antibody (SGN-CD352A)