

## Anti-CRALBP RLBP1 Monoclonal Antibody

Catalog Number: M05421

### About RLBP1

Putative transcription factor involved in pancreas development and function.

### Overview

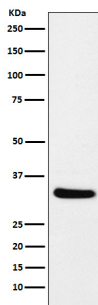
Product Name	Anti-CRALBP RLBP1 Monoclonal Antibody
Reactive Species	Mouse, Rat
Description	Boster Bio Anti-CRALBP RLBP1 Monoclonal Antibody catalog # M05421. Tested in WB, IP applications. This antibody reacts with Mouse, Rat.
Application	IP, WB
Clonality	Monoclonal AEFB-18
Formulation	Rabbit IgG in phosphate buffered saline, pH 7.4, 150mM NaCl, 0.02% sodium azide and 50% glycerol, 0.4-0.5mg/ml BSA.
Storage Instructions	Store at -20°C for one year. For short term storage and frequent use, store at 4°C for up to one month. Avoid repeated freeze-thaw cycles.
Host	Rabbit
Uniprot ID	P12271

### Technical Details

Immunogen	A synthesized peptide derived from human CRALBP Participates in the regeneration of active 11-cis-retinol and 11-cis-retinaldehyde, from the inactive 11-trans products of the rhodopsin photocycle and in the de novo synthesis of these retinoids from 11-trans metabolic precursors.
Isotype	Rabbit IgG
Form	Liquid
Concentration	Actual concentration vary by lot. Use suggested dilution ratio to decide dilution procedure.
Purification	Affinity-chromatography
Suggested Dilutions	Dilute the sample so that the expected range of concentrations fall within the detection range of this kit. If the expected range of concentration is unknown, a pilot test should be conducted to decide the optimal dilution ratio for your samples. Some PubMed article(s) citing the expression level of this target are as follows: Boster Bio's internal QC testing used: WB 1:500-1:2000

	IP 1:50
--	---------

## Anti-CRALBP RLBP1 Monoclonal Antibody (M05421) Images



Western blot analysis of CRALBP expression in mouse eyeball lysate.

### Submit a product review to Biocompare.com

Submit a review of this product to Biocompare.com to receive a \$20 Amazon.com giftcard! Your reviews help your fellow scientists make the right decisions. Thank you for your contribution.



Anti-CRALBP RLBP1 Monoclonal Antibody