

Anti-STAB1 Reference Antibody (bexmarilimab)

Catalog Number: M05505

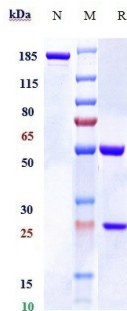
Overview

| | |
|----------------------|----------------------------------------------------------------------------------------------------------------------------------------------------------------------------------------------------------------------------------|
| Product Name | Anti-STAB1 Reference Antibody (bexmarilimab) |
| Reactive Species | Human |
| Description | Boster Bio Anti-STAB1 Reference Antibody (bexmarilimab) (Catalog # M05505). Tested in Flow Cytometry, ELISA, FTA. This antibody reacts with Human. Endotoxin: < 0.886EU/ug,determined by LAL method. Expression system: CHO Cell |
| Application | ELISA, Flow Cytometry, Functional Assay, Kinetics |
| Clonality | Monoclonal |
| Formulation | Purified monoclonal antibody supplied in PBS, pH6.0, without preservative.This antibody is purified through a protein A column. |
| Storage Instructions | Maintain refrigerated at 2-8°C for up to 2 weeks. For long-term storage, aliquot and store at -20°C to avoid repeated freeze-thaw cycles. |
| Uniprot ID | Q9NY15 |

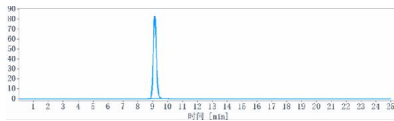
Technical Details

| | |
|---------------|--------|
| Isotype | IgG4 |
| Form | Liquid |
| Concentration | 1mg/ml |

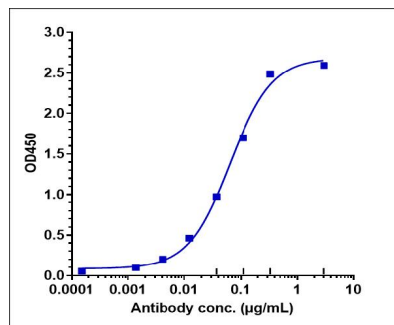
Anti-STAB1 Reference Antibody (bexmarilimab) (M05505) Images



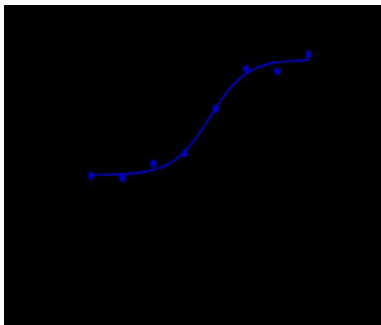
Anti-STAB1 Reference Antibody (bexmarilimab) on SDS-PAGE under reducing (R) condition. The gel was stained with Coomassie Blue. The purity of the protein is greater than 95%



The purity of Anti-STAB1 Reference Antibody (bexmarilimab) is more than 100%



Immobilized human STAB His at 2 µg/mL can bind Anti-STAB1 Reference Antibody (bexmarilimab)



Human STAB A4 HEK293 cells were stained with Anti-STAB1 Reference Antibody (bexmarilimab) and negative control protein respectively

Submit a product review to Biocompare.com

Submit a review of this product to Biocompare.com to receive a \$20 Amazon.com giftcard! Your reviews help your fellow scientists make the right decisions. Thank you for your contribution.



Anti-STAB1 Reference Antibody (bexmarilimab)