

## Anti-Beta-tubulin TUBB4A Monoclonal Antibody

Catalog Number: M05613-2

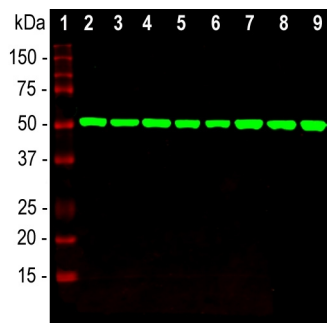
### Overview

Product Name	Anti-Beta-tubulin TUBB4A Monoclonal Antibody
Reactive Species	Human, Monkey, Mouse, Rat
Description	Boster Bio Anti-Beta-tubulin TUBB4A Monoclonal Antibody catalog # M05613-2. Tested in IF, IHC, WB applications. This antibody reacts with Human, Monkey, Mouse, Rat.
Application	IF, IHC, WB
Clonality	Monoclonal
Formulation	Purified antibody at 1mg/mL in 50% PBS, 50% glycerol plus 5mM NaN <sub>3</sub>
Storage Instructions	Store at -20°C for one year. For short term storage and frequent use, store at 4°C for up to one month. Avoid repeated freeze-thaw cycles.
Host	Mouse
Uniprot ID	P04350

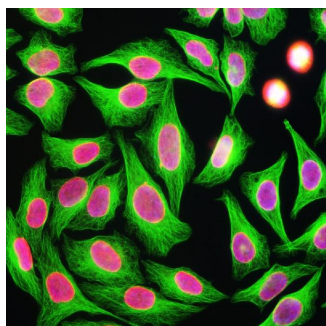
### Technical Details

Immunogen	Pig brain tubulin
Concentration	0.5-1mg/ml, actual concentration vary by lot. Use suggested dilution ratio to decide dilution procedure.
Suggested Dilutions	<p>Dilute the sample so that the expected range of concentrations fall within the detection range of this kit.</p> <p>If the expected range of concentration is unknown, a pilot test should be conducted to decide the optimal dilution ratio for your samples.</p> <p>Some PubMed article(s) citing the expression level of this target are as follows:</p> <p>Boster Bio's internal QC testing used:</p> <p>WB: 1:5,000-1:10,000, ICC/IF and IHC: 1:1000-1:5,000.</p>

## Anti-Beta-tubulin TUBB4A Monoclonal Antibody (M05613-2) Images



Western blot analysis of equal amounts of cell line and whole brain lysates using mouse mAb to  $\beta$ -tubulin M05613-2, dilution 1:5,000 in green: [1] protein standard (red), [2] HEK293, [3] HeLa, [4] SH-SY5Y, [5] COS-1, [6] NIH-3T3, [7] C6 cells, [8] rat brain, and [9] mouse brain. Strong band at 50 kDa corresponds to the  $\beta$ -tubulin proteins.



Immunofluorescence analysis of HeLa cells stained with mouse mAb to  $\beta$ -tubulin, M05613-2, dilution 1:5,000 in green, and costained with chicken pAb to lamin A/C, dilution 1:2,000, in red. Blue is DAPI staining of nuclear DNA. M05613-2 antibody produces strong staining of cytoplasmic microtubules, while the lamin A/C antibody specifically labels the nuclear membrane of these cells.

### Submit a product review to Biocompare.com

Submit a review of this product to Biocompare.com to receive a \$20 Amazon.com giftcard! Your reviews help your fellow scientists make the right decisions. Thank you for your contribution.



Anti-Beta-tubulin TUBB4A Monoclonal Antibody