

Anti-beta Tubulin Mouse Monoclonal Antibody

Catalog Number: M05613-5

About TUBB

Putative transcription factor involved in pancreas development and function.

Overview

Product Name	Anti-beta Tubulin Mouse Monoclonal Antibody
Reactive Species	Chicken, Hamster, Human, Mouse, Rat
Description	Boster Bio Anti-beta Tubulin Mouse Monoclonal Antibody catalog # M05613-5. Tested in WB, IHC, ICC/IF applications. This antibody reacts with Human, Mouse, Rat, Chicken, Hamster.
Application	IF, IHC, ICC, WB
Clonality	Monoclonal 17T13
Formulation	Mouse IgG in phosphate buffered saline, pH 7.4, 150mM NaCl, 0.02% sodium azide and 50% glycerol, 0.4-0.5mg/ml BSA.
Storage Instructions	Store at -20°C for one year. For short term storage and frequent use, store at 4°C for up to one month. Avoid repeated freeze-thaw cycles.
Host	Mouse
Uniprot ID	P07437

Technical Details

Immunogen	A synthesized peptide derived from human beta Tubulin
Isotype	IgG1
Form	Liquid
Concentration	Actual concentration vary by lot. Use suggested dilution ratio to decide dilution procedure.
Purification	Affinity-chromatography
Suggested Dilutions	<p>Dilute the sample so that the expected range of concentrations fall within the detection range of this kit.</p> <p>If the expected range of concentration is unknown, a pilot test should be conducted to decide the optimal dilution ratio for your samples.</p> <p>Some PubMed article(s) citing the expression level of this target are as follows:</p> <p>Boster Bio's internal QC testing used:</p> <p>WB 1:3000-1:10000</p> <p>IHC 1:50-1:200</p> <p>ICC/IF 1:50-1:200</p>

Anti-beta Tubulin Mouse Monoclonal Antibody (M05613-5) Images

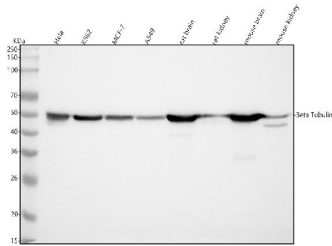
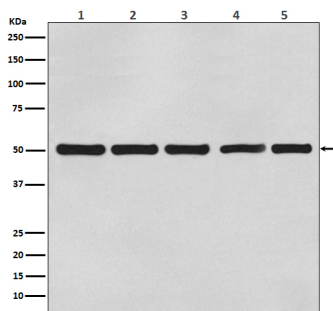


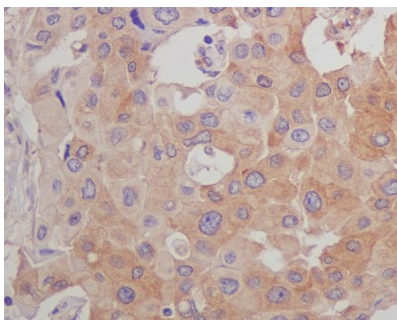
Figure 1. Western blot analysis of beta Tubulin using anti-beta Tubulin antibody (M05613-5). Electrophoresis was performed on a 5-20% SDS-PAGE gel at 70V (Stacking gel) / 90V (Resolving gel) for 2-3 hours. The sample well of each lane was loaded with 30 ug of sample under reducing conditions.

Lane 1: human Hela whole cell lysates,
Lane 2: human K562 whole cell lysates,
Lane 3: human MCF-7 whole cell lysates,
Lane 4: human A549 whole cell lysates,
Lane 5: rat brain tissue lysates,
Lane 6: rat kidney tissue lysates,
Lane 7: mouse brain tissue lysates,
Lane 8: mouse kidney tissue lysates.

After electrophoresis, proteins were transferred to a nitrocellulose membrane at 150 mA for 50-90 minutes. Blocked the membrane with 5% non-fat milk/TBS for 1.5 hour at RT. The membrane was incubated with mouse anti-beta Tubulin antigen affinity purified monoclonal antibody (Catalog # M05613-5) at 1:3000 overnight at 4°C, then washed with TBS-0.1%Tween 3 times with 5 minutes each and probed with a goat anti-mouse IgG-HRP secondary antibody at a dilution of 1:500 for 1.5 hour at RT. The signal is developed using an Enhanced Chemiluminescent detection (ECL) kit (Catalog # EK1002) with Tanon 5200 system. A specific band was detected for beta Tubulin at approximately 50 kDa. The expected band size for beta Tubulin is at 50 kDa.

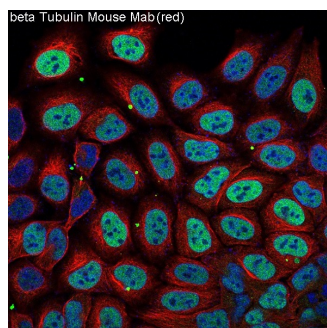


Western blot analysis of beta Actin expression in (1) A431 cell lysate; (2) Rat brain lysate; (3) Mouse kidney lysate; (4) Chicken lung lysate; (5) Hamster spleen lysate with beta Tubulin Mouse Monoclonal Antibody.



Immunohistochemical analysis of paraffin-embedded human breast carcinoma, using beta Tubulin Mouse Monoclonal Antibody.

Immunofluorescent analysis of Hela cells, using beta Tubulin



mAb.

Submit a product review to Biocompare.com

Submit a review of this product to Biocompare.com to receive a \$20 Amazon.com giftcard! Your reviews help your fellow scientists make the right decisions. Thank you for your contribution.



Anti-beta Tubulin Mouse Monoclonal Antibody