

Anti-beta Tubulin TUBB Rabbit Monoclonal Antibody

Catalog Number: M05613

About TUBB

Putative transcription factor involved in pancreas development and function.

Overview

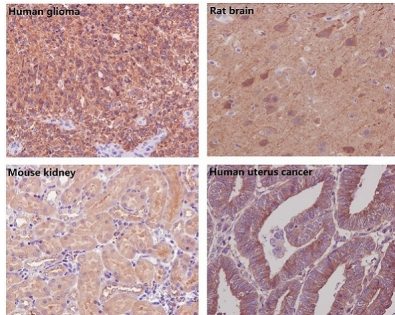
Product Name	Anti-beta Tubulin TUBB Rabbit Monoclonal Antibody
Reactive Species	Human, Mouse, Rat
Description	Boster Bio Anti-beta Tubulin TUBB Rabbit Monoclonal Antibody catalog # M05613. Tested in WB, IHC, ICC/IF, Flow Cytometry applications. This antibody reacts with Human, Mouse, Rat.
Application	Flow Cytometry, IF, IHC, ICC, WB
Clonality	Monoclonal BI-20
Formulation	Rabbit IgG in phosphate buffered saline, pH 7.4, 150mM NaCl, 0.02% sodium azide and 50% glycerol, 0.4-0.5mg/ml BSA.
Storage Instructions	Store at -20°C for one year. For short term storage and frequent use, store at 4°C for up to one month. Avoid repeated freeze-thaw cycles.
Host	Rabbit
Uniprot ID	P07437

Technical Details

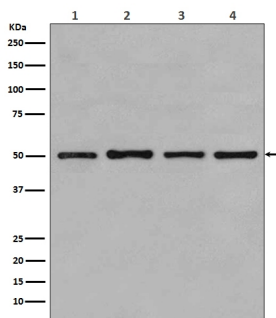
Immunogen	A synthesized peptide derived from human beta Tubulin
Isotype	Rabbit IgG
Form	Liquid
Concentration	Actual concentration vary by lot. Use suggested dilution ratio to decide dilution procedure.
Purification	Affinity-chromatography
Suggested Dilutions	<p>Dilute the sample so that the expected range of concentrations fall within the detection range of this kit.</p> <p>If the expected range of concentration is unknown, a pilot test should be conducted to decide the optimal dilution ratio for your samples.</p> <p>Some PubMed article(s) citing the expression level of this target are as follows:</p> <p>Boster Bio's internal QC testing used:</p> <p>WB 1:3000-1:20000</p> <p>IHC 1:50-1:200</p> <p>ICC/IF 1:50-1:200</p>

	FC 1:100
--	----------

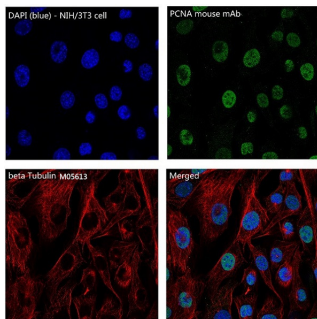
Anti-beta Tubulin TUBB Rabbit Monoclonal Antibody (M05613) Images



Immunohistochemical analysis of paraffin-embedded (1) Human glioma; (2) Rat brain; (3) Mouse kidney; (4) Human uterus cancer, using beta Tubulin Antibody.



Western blot analysis of beta Tubulin expression in (1) MCF-7 cell lysate; (2) COS-1 cell lysate; (3) Jurkat cell lysate; (4) HeLa cell lysate.



Immunofluorescent analysis of NIH/3T3 cells, using beta Tubulin Antibody .

5 Publications Citing This Product

1. PubMed ID: 31933182, Shan W,Han F,Xu Y,Shi Y.Stathmin Regulates Spatiotemporal Variation in the Memory Loop in Single-Prolonged Stress Rats. J Mol Neurosci. 2020 Apr;70(4):576-589.doi: 10.1007/s12031-019-01459-w.Epub 2020 Jan 13.PMID: 31933182.
2. PubMed ID: 32201510, Hu X,Lu E,Pan C,Xu Y,Zhu X.Overexpression and biological function of PRDX6 in human cervical cancer.J Cancer.2020 Feb 10;11(9):2390-2400.doi:10.7150/jca.39892.PMID:32201510;PMCID:PMC7066013.
3. PubMed ID: 26649146, Nrf2/ARE pathway involved in oxidative stress induced by paraquat in human neural progenitor cells

Visit bosterbio.com/anti-beta-tubulin-rabbit-monoclonal-antibody-m05613-boster.html to see all 5 publications.

Submit a product review to Biocompare.com

Submit a review of this product to Biocompare.com to receive a \$20 Amazon.com giftcard! Your



reviews help your fellow scientists make the right decisions. Thank you for your contribution.

Anti-beta Tubulin TUBB Rabbit Monoclonal Antibody