

Anti-TUBB2B Mouse Monoclonal Antibody [Clone ID: OTI6D11]

Catalog Number: M05849

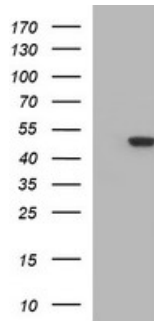
Overview

Product Name	Anti-TUBB2B Mouse Monoclonal Antibody [Clone ID: OTI6D11]
Reactive Species	Human, Mouse, Rat
Description	Boster Bio TUBB2B mouse monoclonal antibody, clone OTI6D11. Catalog# M05849. Tested in IF, IHC, WB. This antibody reacts with Human, Mouse, Rat.
Application	IF, IHC, WB
Clonality	Monoclonal OTI6D11
Formulation	PBS (PH 7.3) containing 1% BSA, 50% glycerol and 0.02% sodium azide.
Storage Instructions	Store at -20°C as received.
Host	Mouse
Uniprot ID	Q9BVA1

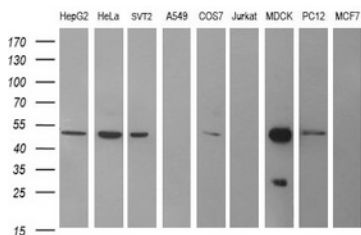
Technical Details

Immunogen	Full length human recombinant protein of human TUBB2B (NP_821080) produced in HEK293T cell.
Isotype	IgG2a
Concentration	1 mg/ml
Purification	Purified from mouse ascites fluids or tissue culture supernatant by affinity chromatography (protein A/G)
Suggested Dilutions	Dilute the sample so that the expected range of concentrations fall within the detection range of this kit. If the expected range of concentration is unknown, a pilot test should be conducted to decide the optimal dilution ratio for your samples. Some PubMed article(s) citing the expression level of this target are as follows:

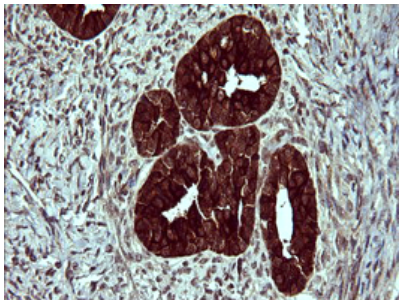
Anti-TUBB2B Mouse Monoclonal Antibody [Clone ID: OTI6D11] (M05849) Images



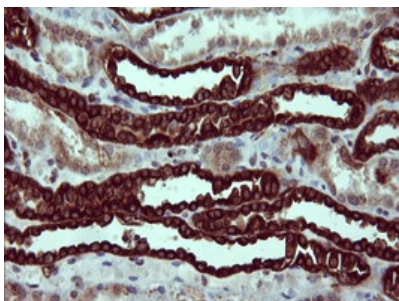
HEK293T cells were transfected with the pCMV6-ENTRY control (Left lane) or pCMV6-ENTRY TUBB2B (Right lane) cDNA for 48 hrs and lysed. Equivalent amounts of cell lysates (5 ug per lane) were separated by SDS-PAGE and immunoblotted with anti-TUBB2B.



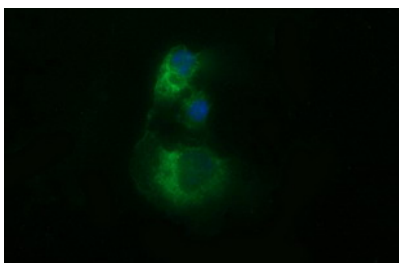
Western blot analysis of extracts (35ug) from 9 different cell lines by using anti-TUBB2B monoclonal antibody (HepG2: human; HeLa: human; SVT2: mouse; A549: human; COS7: monkey; Jurkat: human; MDCK: canine; PC12: rat; MCF7: human).



Immunohistochemical staining of paraffin-embedded Adenocarcinoma of Human ovary tissue using anti-TUBB2B mouse monoclonal antibody. (M05849)

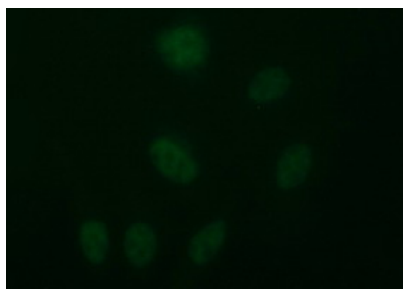


Immunohistochemical staining of paraffin-embedded Human Kidney tissue within the normal limits using anti-TUBB2B mouse monoclonal antibody. (M05849)



Anti-TUBB2B mouse monoclonal antibody (M05849) immunofluorescent staining of COS7 cells transiently transfected by pCMV6-ENTRY TUBB2B.

Immunofluorescent staining of HeLa cells using anti-TUBB2B



mouse monoclonal antibody (M05849).

Submit a product review to Biocompare.com

Submit a review of this product to Biocompare.com to receive a \$20 Amazon.com giftcard! Your reviews help your fellow scientists make the right decisions. Thank you for your contribution.



Anti-TUBB2B Mouse Monoclonal Antibody [Clone ID: OTI6D11]