

Anti-DLL3 Reference Antibody (rovalpituzumab-MMAE)

Catalog Number: M05871-1

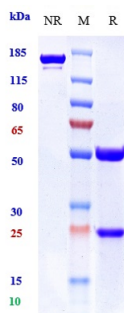
Overview

Product Name	Anti-DLL3 Reference Antibody (rovalpituzumab-MMAE)
Reactive Species	Cynomolgus monkey, Human, Mouse, Rat
Description	Boster Bio Anti-DLL3 Reference Antibody (rovalpituzumab-MMAE) (Catalog # M05871-1). Tested in Flow Cytometry, ELISA, FTA. This antibody reacts with Rat, Cynomolgus monkey, Human, Mouse. Endotoxin: < 0.894EU/ug,determined by LAL method. Expression system: CHO Cell
Application	ELISA, Flow Cytometry, Functional Assay, Kinetics
Clonality	Monoclonal
Formulation	Purified monoclonal antibody supplied in PBS, pH6.0, without preservative.This antibody is purified through a protein A column.
Storage Instructions	Maintain refrigerated at 2-8°C for up to 2 weeks. For long-term storage, aliquot and store at -20°C to avoid repeated freeze-thaw cycles.
Uniprot ID	Q9NYJ7

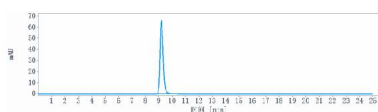
Technical Details

Isotype	IgG1
Form	Liquid
Concentration	1mg/ml

Anti-DLL3 Reference Antibody (rovalpituzumab-MMAE) (M05871-1) Images



Anti-DLL3 Reference Antibody (rovalpituzumab-MMAE) on SDS-PAGE under reducing (R) condition. The gel was stained with Coomassie Blue. The purity of the protein is greater than 90%



The purity of Anti-DLL3 Reference Antibody (rovalpituzumab-MMAE) is more than 95%

Submit a product review to Biocompare.com

Submit a review of this product to Biocompare.com to receive a \$20 Amazon.com giftcard! Your reviews help your fellow scientists make the right decisions. Thank you for your contribution.



Anti-DLL3 Reference Antibody (rovalpituzumab-MMAE)