

## Anti-gamma Sarcoglycan Rabbit Monoclonal Antibody

Catalog Number: M05934

### About SGCG

Putative transcription factor involved in pancreas development and function.

### Overview

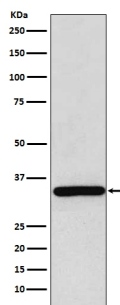
Product Name	Anti-gamma Sarcoglycan Rabbit Monoclonal Antibody
Reactive Species	Human
Description	Boster Bio Anti-gamma Sarcoglycan Rabbit Monoclonal Antibody catalog # M05934. Tested in WB, IHC, IP applications. This antibody reacts with Human.
Application	IP, IHC, WB
Clonality	Monoclonal AbS34
Formulation	Rabbit IgG in phosphate buffered saline, pH 7.4, 150mM NaCl, 0.02% sodium azide and 50% glycerol, 0.4-0.5mg/ml BSA.
Storage Instructions	Store at -20°C for one year. For short term storage and frequent use, store at 4°C for up to one month. Avoid repeated freeze-thaw cycles.
Host	Rabbit
Uniprot ID	Q13326

### Technical Details

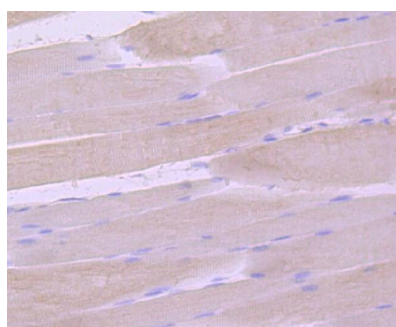
Immunogen	A synthesized peptide derived from human gamma Sarcoglycan
Isotype	Rabbit IgG
Form	Liquid
Concentration	Actual concentration vary by lot. Use suggested dilution ratio to decide dilution procedure.
Purification	Affinity-chromatography
Suggested Dilutions	<p>Dilute the sample so that the expected range of concentrations fall within the detection range of this kit.</p> <p>If the expected range of concentration is unknown, a pilot test should be conducted to decide the optimal dilution ratio for your samples.</p> <p>Some PubMed article(s) citing the expression level of this target are as follows:</p> <p>Boster Bio's internal QC testing used:</p> <p>WB 1:500-1:2000 IHC 1:50-1:200 IP 1:50</p>



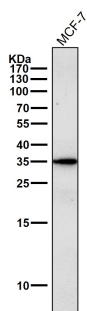
## Anti-gamma Sarcoglycan Rabbit Monoclonal Antibody (M05934) Images



Western blot analysis of gamma Sarcoglycan expression in Human skeletal muscle lysate.



Immunohistochemical analysis of paraffin-embedded mouse skeletal muscle tissue using anti-gamma Sarcoglycan antibody. The section was pre-treated using heat mediated antigen retrieval with Tris-EDTA buffer (pH 8.0-8.4) for 20 minutes. The tissues were blocked in 5% BSA for 30 minutes at room temperature, washed with ddH<sub>2</sub>O and PBS, and then probed with the primary antibody (1/100) for 30 minutes at room temperature. The detection was performed using an HRP conjugated compact polymer system. DAB was used as the chromogen. Tissues were counterstained with hematoxylin and mounted with DPX.



All lanes use the Antibody at 1:2K dilution for 1 hour at room temperature.

### Submit a product review to Biocompare.com

Submit a review of this product to Biocompare.com to receive a \$20 Amazon.com giftcard! Your reviews help your fellow scientists make the right decisions. Thank you for your contribution.



Anti-gamma Sarcoglycan Rabbit Monoclonal Antibody