

Anti-Tubulin gamma Rabbit Monoclonal Antibody

Catalog Number: M06313

About TUBG1

Putative transcription factor involved in pancreas development and function.

Overview

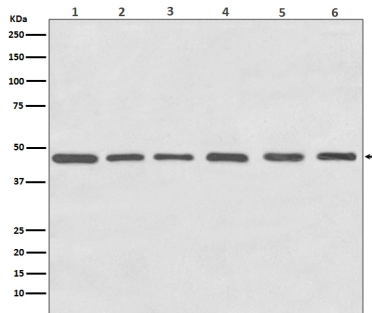
Product Name	Anti-Tubulin gamma Rabbit Monoclonal Antibody
Reactive Species	Human, Monkey, Mouse, Rat, Zebrafish
Description	Boster Bio Anti-Tubulin gamma Rabbit Monoclonal Antibody catalog # M06313. Tested in WB, IHC, ICC/IF, IP, Flow Cytometry applications. This antibody reacts with Human, Monkey, Mouse, Rat, Zebrafish.
Application	Flow Cytometry, IP, IF, IHC, ICC, WB
Clonality	Monoclonal DAE-20
Formulation	Rabbit IgG in phosphate buffered saline, pH 7.4, 150mM NaCl, 0.02% sodium azide and 50% glycerol, 0.4-0.5mg/ml BSA.
Storage Instructions	Store at -20°C for one year. For short term storage and frequent use, store at 4°C for up to one month. Avoid repeated freeze-thaw cycles.
Host	Rabbit
Uniprot ID	P23258

Technical Details

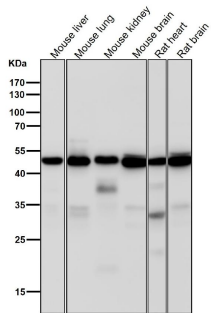
Immunogen	A synthesized peptide derived from human Tubulin gamma
Isotype	Rabbit IgG
Form	Liquid
Concentration	Actual concentration vary by lot. Use suggested dilution ratio to decide dilution procedure.
Purification	Affinity-chromatography
Suggested Dilutions	<p>Dilute the sample so that the expected range of concentrations fall within the detection range of this kit.</p> <p>If the expected range of concentration is unknown, a pilot test should be conducted to decide the optimal dilution ratio for your samples.</p> <p>Some PubMed article(s) citing the expression level of this target are as follows:</p> <p>Boster Bio's internal QC testing used:</p> <p>WB 1:500-1:2000</p> <p>IHC 1:50-1:200</p>

	ICC/IF 1:50-1:200 IP 1:50 FC 1:50
--	---

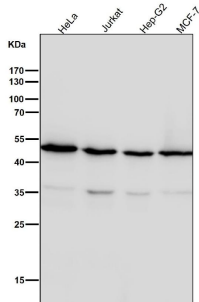
Anti-Tubulin gamma Rabbit Monoclonal Antibody (M06313) Images



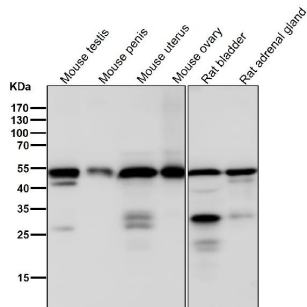
Western blot analysis of Tubulin gamma expression in (1) HeLa cell lysate; (2) NIH 3T3 cell lysate; (3) C6 cell lysate; (4) Zebrafish lysates; (5) COS-1 cell lysate; (6) MDCK cell lysate.



All lanes use the Antibody at 1:5K dilution for 1 hour at room temperature.

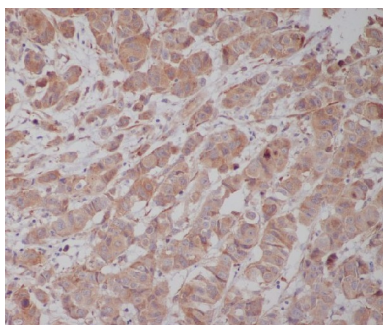
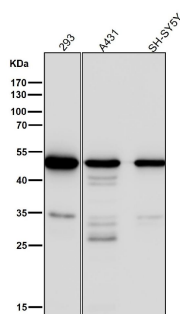


All lanes use the Antibody at 1:5K dilution for 1 hour at room temperature.



All lanes use the Antibody at 1:5K dilution for 1 hour at room temperature.

All lanes use the Antibody at 1:5K dilution for 1 hour at room temperature.



Immunohistochemical analysis of paraffin-embedded human breast cancer, using Tubulin gamma Antibody.

1 Publications Citing This Product

1. PubMed ID: 26493771, The SUMO Protease SENP3 Orchestrates G2-M Transition and Spindle Assembly in Mouse Oocytes

Visit bosterbio.com/anti-tubulin-gamma-rabbit-monoclonal-antibody-m06313-boster.html to see all 1 publications.

Submit a product review to Biocompare.com

Submit a review of this product to Biocompare.com to receive a \$20 Amazon.com giftcard! Your reviews help your fellow scientists make the right decisions. Thank you for your contribution.



Anti-Tubulin gamma Rabbit Monoclonal Antibody