

Anti-PI 3 Kinase p55 gamma PIK3R3 Rabbit Monoclonal Antibody

Catalog Number: M06707

About PIK3R3

Putative transcription factor involved in pancreas development and function.

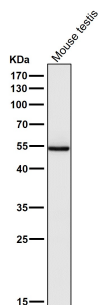
Overview

Product Name	Anti-PI 3 Kinase p55 gamma PIK3R3 Rabbit Monoclonal Antibody
Reactive Species	Human, Mouse, Rat
Description	Boster Bio Anti-PI 3 Kinase p55 gamma PIK3R3 Rabbit Monoclonal Antibody catalog # M06707. Tested in WB, IHC, ICC/IF applications. This antibody reacts with Human, Mouse, Rat.
Application	IF, IHC, ICC, WB
Clonality	Monoclonal DHC-16
Formulation	Rabbit IgG in phosphate buffered saline, pH 7.4, 150mM NaCl, 0.02% sodium azide and 50% glycerol, 0.4-0.5mg/ml BSA.
Storage Instructions	Store at -20°C for one year. For short term storage and frequent use, store at 4°C for up to one month. Avoid repeated freeze-thaw cycles.
Host	Rabbit
Uniprot ID	Q92569

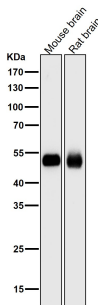
Technical Details

Immunogen	A synthesized peptide derived from human PI 3 Kinase p55 gamma
Isotype	Rabbit IgG
Form	Liquid
Concentration	Actual concentration vary by lot. Use suggested dilution ratio to decide dilution procedure.
Purification	Affinity-chromatography
Suggested Dilutions	<p>Dilute the sample so that the expected range of concentrations fall within the detection range of this kit.</p> <p>If the expected range of concentration is unknown, a pilot test should be conducted to decide the optimal dilution ratio for your samples.</p> <p>Some PubMed article(s) citing the expression level of this target are as follows:</p> <p>Boster Bio's internal QC testing used:</p> <p>WB 1:500-1:1000 IHC 1:50-1:200 ICC/IF 1:50-1:200</p>

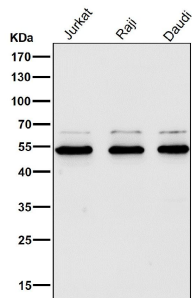
Anti-PI 3 Kinase p55 gamma PIK3R3 Rabbit Monoclonal Antibody (M06707) Images



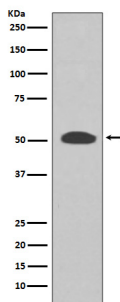
All lanes use the Antibody at 1:2K dilution for 1 hour at room temperature.



All lanes use the Antibody at 1:2K dilution for 1 hour at room temperature.

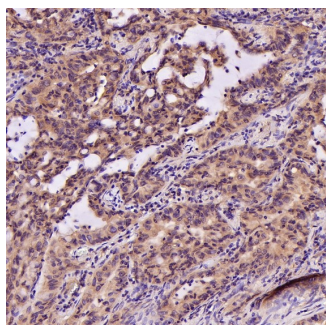
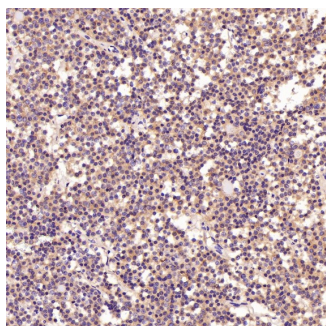


All lanes use the Antibody at 1:2K dilution for 1 hour at room temperature.

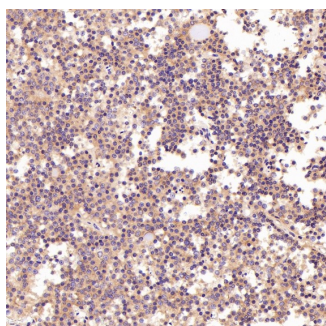


Western blot analysis of PI 3 Kinase p55 gamma expression in SH-SY5Y cell lysate.

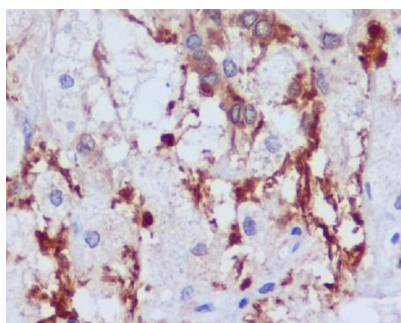
Immunohistochemical analysis of paraffin-embedded Human pituitary tumor, using the Antibody at 1:200 dilution.



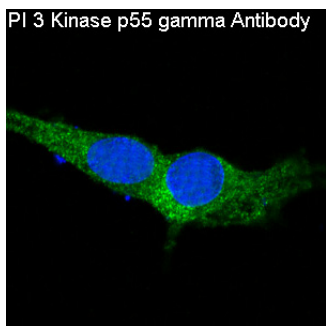
Immunohistochemical analysis of paraffin-embedded Human lung adenocarcinoma, using the Antibody at 1:200 dilution.



Immunohistochemical analysis of paraffin-embedded Human pituitary tumor, using the Antibody at 1:800 dilution.



Immunohistochemical analysis of paraffin-embedded human astrocytoma, using PI 3 Kinase p55 gamma Antibody.



Immunofluorescent analysis of C6 cells, using PI 3 Kinase p55 gamma Antibody .

Submit a product review to Biocompare.com

Submit a review of this product to Biocompare.com to receive a \$20 Amazon.com giftcard! Your reviews help your fellow scientists make the right decisions. Thank you for your contribution.



Anti-PI 3 Kinase p55 gamma PIK3R3 Rabbit Monoclonal Antibody